

MSX2 polyclonal antibody

Catalog: BS62390

Host: Rabbit

Reactivity: Human,Rat,Mouse

BackGround:

Msx homeobox genes encode for transcription factors that control morphogenesis and are expressed at sites of epithelial-mesenchymal interaction during embryogenesis, such as the Tooth. Two of these genes, Msx-1 and Msx-2, are key factors for the development of tooth and craniofacial skeleton. Msx-1 also down-regulates a master gene of skeletal cells differentiation. Msx-1 and Msx-2 contribute to the initial patterning of dentition as well as playing a pivotal role in terminal cell differentiation. In addition, Msx-1 and Msx-2 are expressed in the epidermis, hair follicles and fibroblasts of the developing fetal skin. In adult skin, Msx-1 and Msx-2 expression is confined to epithelially derived structures. Msx-2 is detected as a diffuse cytoplasmic signal in fetal epidermis and portions of the hair follicle and dermis, but is localized to the nucleus in the adult epidermis. Msx-1 and Msx-2 are also expressed during critical developmental stages of neural tube and neuralcrest, suggesting that these genes play an important role in organogenesis.

Product:

Rabbit IgG, 1mg/ml in PBS with 0.02% sodium azide, 50% glycerol, pH7.4.

Molecular Weight:

~ 34 kDa

Swiss-Prot:

P35548

Purification&Purity:

The protein was purified from E.coli and the purity is > 95% (by SDS-PAGE).

Applications:

WB:1:500~1:1000 IHC:1:50~1:200

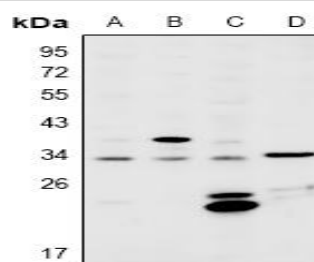
Storage&Stability:

Store at 4 °C short term. Aliquot and store at -20 °C long term. Avoid freeze-thaw cycles.

Specificity:

MSX2 polyclonal antibody detects endogenous levels of MSX2 protein.

DATA:



Western blot (WB) analysis of MSX2 polyclonal antibody at 1:500 dilution

LaneA:A549 whole cell lysate

LaneB:HEK293T whole cell lysate

LaneC:MEF whole cell lysate

LaneD:H9C2 whole cell lysate

Note:

For research use only, not for use in diagnostic procedure.

Bioworld Technology, Inc.

Add: 1660 South Highway 100, Suite 500 St. Louis Park, MN 55416,USA.

Email: info@bioworld.com

Tel: 6123263284

Fax: 6122933841

Bioworld technology, co. Ltd.

Add: No 9, weidi road Qixia District Nanjing, 210046, P. R. China.

Email: info@biogot.com

Tel: 0086-025-68037686

Fax: 0086-025-68035151