

## GRTP1 polyclonal antibody

Catalog: BS62384

Host: Rabbit

Reactivity: Human,Rat,Mouse

### BackGround:

Pituitary growth hormone (GH), also designated somatotropin, plays a crucial role in stimulating and controlling the growth, metabolism and differentiation of many mammalian cell types by modulating the synthesis of multiple mRNA species. These effects are mediated by the binding of GH to its membranebound receptor, GHR, and involve a phosphorylation cascade that results in the modulation of numerous signaling pathways. GRTP1 (growth hormoneregulated TBC protein 1), also designated TBC1 domain family member 6, is a 336 amino acid protein with expression modulated by growth hormone. The TBC1 domain of GRTP1 is a region that is notably conserved among GTPaseactivating proteins, which characteristically play a role in the cell cycle and mitosis coordination. Interestingly, expression of GRTP1 is significantly upregulated in post-puberty testis and then maintained in the adult, suggesting that the germ cell may be the major site of GRTP1 function. There are two isoforms of GRTP1, which are a result of alternative splicing events.

### Product:

Rabbit IgG, 1mg/ml in PBS with 0.02% sodium azide, 50% glycerol, pH7.4.

### Molecular Weight:

~ 38 kDa

### Swiss-Prot:

Q5TC63

### Purification&Purity:

The protein was purified from E.coli and the purity is > 95% (by SDS-PAGE).

### Applications:

WB:1:500~1:1000 IHC:1:50~1:200

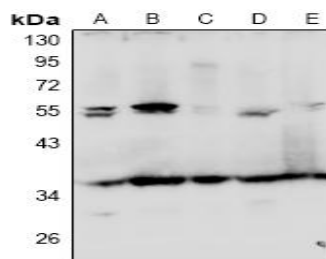
### Storage&Stability:

Store at 4 °C short term. Aliquot and store at -20 °C long term. Avoid freeze-thaw cycles.

### Specificity:

GRTP1 polyclonal antibody detects endogenous levels of GRTP1 protein.

### DATA:



Western blot (WB) analysis of GRTP1 polyclonal antibody at 1:500 dilution

LaneA:A549 whole cell lysate

LaneB:Jurkat whole cell lysate

LaneC:THP-1 whole cell lysate

LaneD:PC12 whole cell lysate

LaneE:Raw whole cell lysate

### Note:

For research use only, not for use in diagnostic procedure.

### Bioworld Technology, Inc.

Add: 1660 South Highway 100, Suite 500 St. Louis Park, MN 55416,USA.

Email: [info@bioworld.com](mailto:info@bioworld.com)

Tel: 6123263284

Fax: 6122933841

### Bioworld technology, co. Ltd.

Add: No 9, weidi road Qixia District Nanjing, 210046, P. R. China.

Email: [info@biogot.com](mailto:info@biogot.com)

Tel: 0086-025-68037686

Fax: 0086-025-68035151