

## Connexin 31.3 polyclonal antibody

Catalog: BS62382

Host: Rabbit

Reactivity: Human,Rat,Mouse

**BackGround:**

One gap junction consists of a cluster of closely packed pairs of transmembrane channels, the connexons, through which materials of low MW diffuse from one cell to a neighboring cell.

**Product:**

Rabbit IgG, 1mg/ml in PBS with 0.02% sodium azide, 50% glycerol, pH7.4.

**Molecular Weight:**

~ 31 kDa

**Swiss-Prot:**

Q8NFK1

**Purification&Purity:**

The protein was purified from E.coli and the purity is > 95% (by SDS-PAGE).

**Applications:**

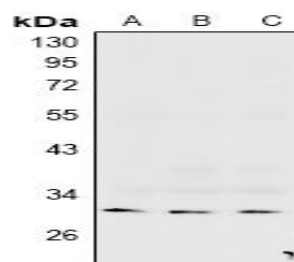
WB:1:500~1:1000 IHC:1:50~1:200

**Storage&Stability:**

Store at 4 °C short term. Aliquot and store at -20 °C long term. Avoid freeze-thaw cycles.

**Specificity:**

Connexin 31.3 polyclonal antibody detects endogenous levels of Connexin 31.3 protein.

**DATA:**

Western blot (WB) analysis of Connexin 31.3 polyclonal antibody at 1:500 dilution

LaneA:The brain tissue lysate of Mouse

LaneB:The brain tissue lysate of Rat

LaneC:HepG2 whole cell lysate

**Note:**

For research use only, not for use in diagnostic procedure.

**Bioworld Technology, Inc.**

Add: 1660 South Highway 100, Suite 500 St. Louis Park, MN 55416, USA.

Email: [info@bioworld.com](mailto:info@bioworld.com)

Tel: 6123263284

Fax: 6122933841

**Bioworld technology, co. Ltd.**

Add: No 9, weidi road Qixia District Nanjing, 210046, P. R. China.

Email: [info@biogol.com](mailto:info@biogol.com)

Tel: 0086-025-68037686

Fax: 0086-025-68035151