

## GFM2 polyclonal antibody

Catalog: BS62364

Host: Rabbit

Reactivity: Human,Mouse,Rat

### BackGround:

Mitochondrial translation is critical for maintaining function and preventing impairment of mitochondrial DNA, with mitochondrial translation elongation factors playing an essential role in this process. EF-G2 (elongation factor G2), also known as RRF2mt (ribosome-releasing factor 2, mitochondrial), GFM2 or MSTP027, is a 779 amino acid protein belonging to the GTP-binding elongation factor family and EF-G/EF-2 subfamily. Localizing to mitochondrion, EF-G2 is widely expressed with high levels found in adult heart, skeletal muscle and kidney as well as adult and fetal liver. EF-G2 mediates ribosome recycling and by interacting directly with MRRF on the ribosome large subunit, is required for ribosome dissociation from mRNA. Existing as five alternatively spliced isoforms, the gene encoding EF-G2 maps to human chromosome 5q13.3.

### Product:

Rabbit IgG, 1mg/ml in PBS with 0.02% sodium azide, 50% glycerol, pH7.2

### Molecular Weight:

~ 95 kDa

### Swiss-Prot:

Q969S9

### Purification&Purity:

The antibody was affinity-purified from rabbit antiserum by affinity-chromatography using epitope-specific im-

munogen and the purity is &gt; 95% (by SDS-PAGE).

### Applications:

WB:1:500~1:1000 IHC:1:50~1:200 IF:1:50~1:200

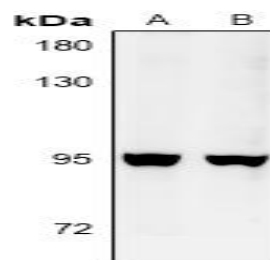
### Storage&Stability:

Store at 4 °C short term. Aliquot and store at -20 °C long term. Avoid freeze-thaw cycles.

### Specificity:

GFM2 polyclonal antibody detects endogenous levels of GFM2 protein.

### DATA:



Western blot (WB) analysis of GFM2 polyclonal antibody at 1:500 dilution

LaneA:Hela whole cell lysate

LaneB:PC12 whole cell lysate

### Note:

For research use only, not for use in diagnostic procedure.

### Bioworld Technology, Inc.

Add: 1660 South Highway 100, Suite 500 St. Louis Park, MN 55416,USA.

Email: [info@bioworld.com](mailto:info@bioworld.com)

Tel: 6123263284

Fax: 6122933841

### Bioworld technology, co. Ltd.

Add: No 9, weidi road Qixia District Nanjing, 210046, P. R. China.

Email: [info@biogot.com](mailto:info@biogot.com)

Tel: 0086-025-68037686

Fax: 0086-025-68035151