

CLIC6 polyclonal antibody

Catalog: BS62333

Host: Rabbit

Reactivity: Human,Mouse,Rat

BackGround:

Chloride intracellular channel 6 (CLIC6) is a probable chloride ion channel belonging to the chloride channel CLIC family. CLIC6 is believed to play a critical role in water-secreting cells, possibly through the regulation of chloride ion transport. 2 essential features distinguish CLIC6 from other members of the family: the CLIC6 protein is significantly longer and the CLIC6 gene contains a GC rich segment, which encodes a 10 amino acid motif repeated 14 times in the amino-terminus. The CLIC6 gene is a rare example of large-scale segmental paralogy in which a large (approximately 500 kb) segment on human chromosome (HC) 21 (21q22) is triplicated on HC 1 and HC 6. CLIC6 is also known to interact with dopamine receptors DRD2, DRD3 and DRD4. CLIC6 is primarily expressed in the cytoplasm, however, upon chloride ion efflux from the cell, CLIC6 is translocated to the plasma membrane. CLIC6 has been identified in brain, placenta, pancreas and liver. CLIC6 is a 704 amino acid protein and there are 2 known isoforms, A and B. CLIC6 is also identified as parchorin in rabbit.

Product:

Rabbit IgG, 1mg/ml in PBS with 0.02% sodium azide, 50% glycerol, pH7.2

Molecular Weight:

~ 73 kDa

Swiss-Prot:

Q96NY7

Purification&Purity:

The antibody was affinity-purified from rabbit antiserum by affinity-chromatography using epitope-specific immunogen and the purity is > 95% (by SDS-PAGE).

Applications:

WB:1:500~1:1000

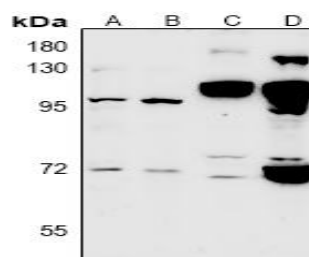
Storage&Stability:

Store at 4 °C short term. Aliquot and store at -20 °C long term. Avoid freeze-thaw cycles.

Specificity:

CLIC6 polyclonal antibody detects endogenous levels of CLIC6 protein.

DATA:



Western blot (WB) analysis of CLIC6 polyclonal antibody at 1:500 dilution

LaneA:A549 whole cell lysate

LaneB:L02 whole cell lysate

LaneC:AML-12 whole cell lysate

LaneD:PC12 whole cell lysate

Note:

For research use only, not for use in diagnostic procedure.

Bioworld Technology, Inc.

Add: 1660 South Highway 100, Suite 500 St. Louis Park, MN 55416,USA.

Email: info@bioworld.com

Tel: 6123263284

Fax: 6122933841

Bioworld technology, co. Ltd.

Add: No 9, weidi road Qixia District Nanjing, 210046, P. R. China.

Email: info@biogot.com

Tel: 0086-025-68037686

Fax: 0086-025-68035151