

**CEP70 polyclonal antibody**

Catalog: BS62331

Host: Rabbit

Reactivity: Human, Mouse, Rat

BackGround:

Centrosomal protein of 70 kDa, plays a role in the organization of both preexisting and nascent microtubules in interphase cells. During mitosis, required for the organization and orientation of the mitotic spindle.

Product:

Rabbit IgG, 1mg/ml in PBS with 0.02% sodium azide, 50% glycerol, pH7.2

Molecular Weight:

~ 70 kDa

Swiss-Prot:

Q8NHQ1

Purification&Purity:

The antibody was affinity-purified from rabbit antiserum by affinity-chromatography using epitope-specific immunogen and the purity is > 95% (by SDS-PAGE).

Applications:

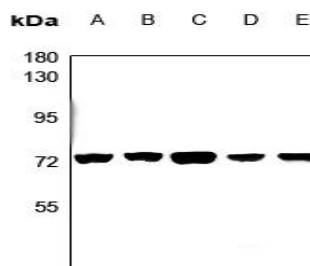
WB:1:500~1:1000 IHC:1:50~1:200

Storage&Stability:

Store at 4 °C short term. Aliquot and store at -20 °C long term. Avoid freeze-thaw cycles.

Specificity:

CEP70 polyclonal antibody detects endogenous levels of CEP70 protein.

DATA:

Western blot (WB) analysis of CEP70 polyclonal antibody at 1:500 dilution

LaneA:CT26 whole cell lysate

LaneB:PC12 whole cell lysate

LaneC:Hela whole cell lysate

LaneD:H1792 whole cell lysate

LaneE:A549 whole cell lysate

Note:

For research use only, not for use in diagnostic procedure.

Bioworld Technology, Inc.

Add: 1660 South Highway 100, Suite 500 St. Louis Park, MN 55416, USA.

Email: info@bioworld.com

Tel: 6123263284

Fax: 6122933841

Bioworld technology, co. Ltd.

Add: No 9, weidi road Qixia District Nanjing, 210046, P. R. China.

Email: info@biogol.com

Tel: 0086-025-68037686

Fax: 0086-025-68035151