

CDC42EP5 polyclonal antibody

Catalog: BS62328

Host: Rabbit

Reactivity: Human, Mouse, Rat

BackGround:

Cdc42 effector protein 5, probably involved in the organization of the actin cytoskeleton. May act downstream of CDC42 to induce actin filament assembly leading to cell shape changes. Induces pseudopodia formation in fibroblasts. Inhibits MAPK8 independently of CDC42 binding. Controls septin organization and this effect is negatively regulated by CDC42.

Product:

Rabbit IgG, 1mg/ml in PBS with 0.02% sodium azide, 50% glycerol, pH7.2

Molecular Weight:

~ 19 kDa

Swiss-Prot:

Q6NZY7

Purification&Purity:

The antibody was affinity-purified from rabbit antiserum by affinity-chromatography using epitope-specific immunogen and the purity is > 95% (by SDS-PAGE).

Applications:

WB:1:500~1:1000 IHC:1:50~1:200

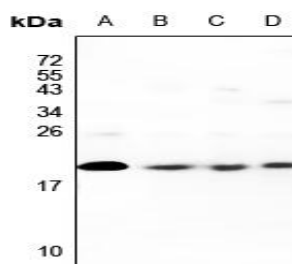
Storage&Stability:

Store at 4 °C short term. Aliquot and store at -20 °C long

term. Avoid freeze-thaw cycles.

Specificity:

CDC42EP5 polyclonal antibody detects endogenous levels of CDC42EP5 protein.

DATA:

Western blot (WB) analysis of CDC42EP5 polyclonal antibody at 1:500 dilution

LaneA:CT26 whole cell lysate

LaneB:PC12 whole cell lysate

LaneC:HepG2 whole cell lysate

LaneD:A549 whole cell lysate

Note:

For research use only, not for use in diagnostic procedure.

Bioworld Technology, Inc.

Add: 1660 South Highway 100, Suite 500 St. Louis Park, MN 55416, USA.

Email: info@bioworld.com

Tel: 6123263284

Fax: 6122933841

Bioworld technology, co. Ltd.

Add: No 9, weidi road Qixia District Nanjing, 210046, P. R. China.

Email: info@biogot.com

Tel: 0086-025-68037686

Fax: 0086-025-68035151