

TAFI polyclonal antibody

Catalog: BS62323

Host: Rabbit

Reactivity: Human,Mouse,Rat

BackGround:

The Thrombin-activatable fibrinolysis inhibitor (TAFI), also designated procarboxypeptidase B2 or procarboxypeptidase U, is a hepatically secreted zymogen that downregulates fibrinolysis when activated by Thrombin. It is synthesized in the liver and circulates in plasma in its proenzyme form. When activated, TAFI removes C-terminal arginine or lysine residues from biologically active peptides such as kinins or anaphylatoxins. TAFI cleaves the lysine residues from Fibrin, which prevents plasminogen from activation into plasmin and retards the lysis of a Fibrin clot. Elevated concentration of TAFI in blood is considered a risk factor for venous thrombosis, whereas a deficiency might contribute to the severity of bleeding disorders in hemophilias A and B. Decreased levels of TAFI are found in chronic liver disease.

Product:

Rabbit IgG, 1mg/ml in PBS with 0.02% sodium azide, 50% glycerol, pH7.2

Molecular Weight:

~ 48 kDa

Swiss-Prot:

Q96IY4

Purification&Purity:

The antibody was affinity-purified from rabbit antiserum by affinity-chromatography using epitope-specific immunogen and the purity is > 95% (by SDS-PAGE).

Applications:

WB:1:500~1:1000

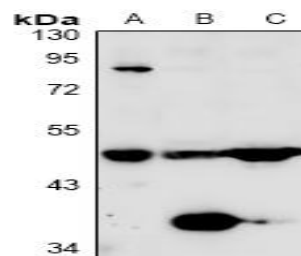
Storage&Stability:

Store at 4 °C short term. Aliquot and store at -20 °C long term. Avoid freeze-thaw cycles.

Specificity:

TAFI polyclonal antibody detects endogenous levels of TAFI protein.

DATA:



Western blot (WB) analysis of TAFI polyclonal antibody at 1:500 dilution

LaneA:HepG2 whole cell lysate

LaneB:The Liver tissue lysate of Mouse

LaneC:The Liver tissue lysate of Rat

Note:

For research use only, not for use in diagnostic procedure.

Bioworld Technology, Inc.

Add: 1660 South Highway 100, Suite 500 St. Louis Park, MN 55416,USA.

Email: info@bioworld.com

Tel: 6123263284

Fax: 6122933841

Bioworld technology, co. Ltd.

Add: No 9, weidi road Qixia District Nanjing, 210046, P. R. China.

Email: info@biogot.com

Tel: 0086-025-68037686

Fax: 0086-025-68035151