

NAP1 polyclonal antibody

Catalog: BS62294

Host: Rabbit

Reactivity: Human

BackGround:

Adapter protein which binds TBK1 and IKKε playing a role in antiviral innate immunity. Activates serine/threonine-protein kinase TBK1 and facilitates its oligomerization. Enhances the phosphorylation of NF-κB p65 subunit RELA by TBK1. Promotes TBK1-induced as well as TNF-α or PMA-induced activation of NF-κB. Participates in IFNβ promoter activation via TICAM1.

Product:

Rabbit IgG, 1mg/ml in PBS with 0.02% sodium azide, 50% glycerol, pH7.2

Molecular Weight:

~ 28 kDa

Swiss-Prot:

Q9H6S1

Purification&Purity:

The antibody was affinity-purified from rabbit antiserum by affinity-chromatography using epitope-specific immunogen and the purity is > 95% (by SDS-PAGE).

Applications:

WB:1:500~1:1000 IHC:1:50~1:200 IF:1:50~1:200

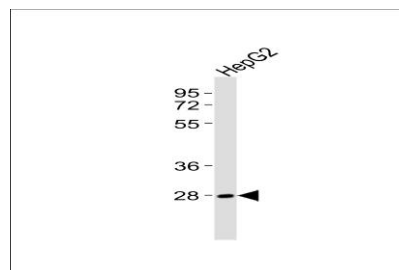
Storage&Stability:

Store at 4 °C short term. Aliquot and store at -20 °C long term. Avoid freeze-thaw cycles.

Specificity:

NAP1 polyclonal antibody detects endogenous levels of NAP1 protein.

DATA:



Western blot analysis of extracts of HepG2 cell line, using NAP1 polyclonal antibody.

Note:

For research use only, not for use in diagnostic procedure.

Bioworld Technology, Inc.

Add: 1660 South Highway 100, Suite 500 St. Louis Park, MN 55416, USA.

Email: info@bioworld.com

Tel: 6123263284

Fax: 6122933841

Bioworld technology, co. Ltd.

Add: No 9, weidi road Qixia District Nanjing, 210046, P. R. China.

Email: info@biogol.com

Tel: 0086-025-68037686

Fax: 0086-025-68035151