



## Islet-2 polyclonal antibody

Catalog: BS62288

Host: Rabbit

Reactivity: Human, Mouse, Rat

### BackGround:

Islet-2 (insulin gene enhancer protein ISL-2) is a 359 amino acid protein encoded by the human gene ISL2. Islet-2 is a nuclear protein that contains two N-terminal LIM domains, followed by a homeodomain and a serine/glutamine/ threonine-rich C-terminus. Islet-2 is a transcriptional factor that defines subclasses of motor neurons that segregate into columns in the spinal cord and select distinct axon pathways. Islet-1 and Islet-2 are initially expressed by all postmitotic spinal motor neurons prior to diversification of somatic and visceral neuronal fates. Somatic, but not visceral, motor neurons maintain Islet-2 expression at later embryonic stages. An early phase of Islet-2 expression by prospective visceral motor neurons of the sympathetic preganglionic motor column is critical for the emergence of complete visceral motor neuron character. Mutations that reduce or eliminate both Islet-1 and Islet-2 activity will result in pronounced defects in visceral motor neuron generation and eroded somatic motor neuron character.

### Product:

Rabbit IgG, 1mg/ml in PBS with 0.02% sodium azide, 50% glycerol, pH7.2

### Molecular Weight:

~ 40 kDa

### Swiss-Prot:

Q96A47

### Purification&Purity:

The antibody was affinity-purified from rabbit antiserum by affinity-chromatography using epitope-specific immunogen and the purity is > 95% (by SDS-PAGE).

### Applications:

WB:1:500~1:1000 IF:1:50~1:200

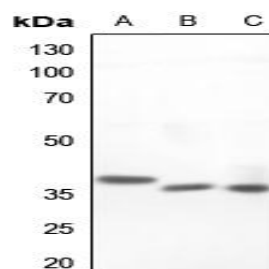
### Storage&Stability:

Store at 4 °C short term. Aliquot and store at -20 °C long term. Avoid freeze-thaw cycles.

### Specificity:

Islet-2 polyclonal antibody detects endogenous levels of Islet-2 protein.

### DATA:



Western blot (WB) analysis of Islet-2 polyclonal antibody at 1:500 dilution

LaneA:Hela whole cell lysate

LaneB:The Liver tissue lysate of Mouse

LaneC:The Liver tissue lysate of Rat

### Note:

For research use only, not for use in diagnostic procedure.

### Bioworld Technology, Inc.

Add: 1660 South Highway 100, Suite 500 St. Louis Park, MN 55416, USA.

Email: [info@bioworld.com](mailto:info@bioworld.com)

Tel: 6123263284

Fax: 6122933841

### Bioworld technology, co. Ltd.

Add: No 9, weidi road Qixia District Nanjing, 210046, P. R. China.

Email: [info@biogot.com](mailto:info@biogot.com)

Tel: 0086-025-68037686

Fax: 0086-025-68035151