

ALDH2 polyclonal antibody

Catalog: BS62202

Host: Rabbit

Reactivity: Human, Rat

BackGround:

ALDH2 is a retinal dehydrogenase that participates in the biosynthesis of retinoic acid (RA). The major liver isoform ALDH1 localizes to cytosolic space, while ALDH2 localizes to the mitochondria. The ALDH1A2 (RALDH2, RALDH2-T) gene produces three different transcripts and also catalyzes the synthesis of RA from retinaldehyde. ALDH2 is present in most Caucasians, yet is absent in 50% of Asians.

Product:

Rabbit IgG, 1mg/ml in PBS with 0.02% sodium azide, 50% glycerol, pH7.2

Molecular Weight:

~ 55 kDa

Swiss-Prot:

P05091

Purification&Purity:

The antibody was affinity-purified from rabbit antiserum by affinity-chromatography using epitope-specific immunogen and the purity is > 95% (by SDS-PAGE).

Applications:

WB: 1:500~1:1000

IHC: 1:50~1:200

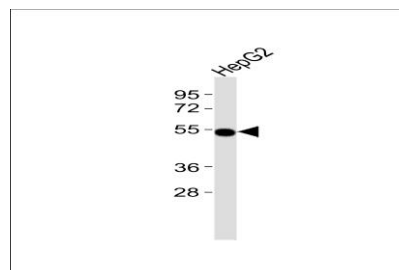
Storage&Stability:

Store at 4 °C short term. Aliquot and store at -20 °C long term. Avoid freeze-thaw cycles.

Specificity:

ALDH2 polyclonal antibody detects endogenous levels of ALDH2 protein.

DATA:



Western blot analysis of extracts of HepG2 cell line, using ALDH2 polyclonal antibody.

Note:

For research use only, not for use in diagnostic procedure.

Bioworld Technology, Inc.

Add: 1660 South Highway 100, Suite 500 St. Louis Park, MN 55416, USA.

Email: info@bioworld.com

Tel: 6123263284

Fax: 6122933841

Bioworld technology, co. Ltd.

Add: No 9, weidi road Qixia District Nanjing, 210046, P. R. China.

Email: info@biogol.com

Tel: 0086-025-68037686

Fax: 0086-025-68035151