

## IL6 polyclonal antibody

Catalog: BS62100

Host: Rabbit

Reactivity: Human,Rat,Mouse

### BackGround:

Acute phase response is induced by interleukin-6 (IL-6) produced by T cells, macrophages, fibroblasts, endothelial and other cells. IL-6 induces proliferation or differentiation in many cell types including B cells, thymocytes and T cells. IL-6, in concert with TGF- $\beta$ , is important for developing Th17 responses. IL-6 binds to IL-6R $\alpha$  and through this association induces gp130 homodimerization. gp130 homodimerization triggers the Jak/Stat cascade and the SHP-2/Erk MAP kinase cascade. IL-6 also forms a complex with an IL-6R $\alpha$  splice variant that is nonmembrane-associated. The IL-6/soluble IL-6R $\alpha$  complex can then activate the gp130 signaling pathway in cells that express gp130 but not IL-6R $\alpha$ . Research studies have shown that IL-6, through increasing expression of proangiogenic VEGF, may also contribute to metastatic breast cancer.

### Product:

Rabbit IgG, 1mg/ml in PBS with 0.02% sodium azide, 50% glycerol, pH7.2.

### Molecular Weight:

~ 28 kDa

### Swiss-Prot:

P05231

### Purification&Purity:

The antibody was affinity-purified from rabbit antiserum by affinity-chromatography using epitope-specific immunogen and the purity is > 96% (by SDS-PAGE).

### Applications:

WB: 1:500~1:1000

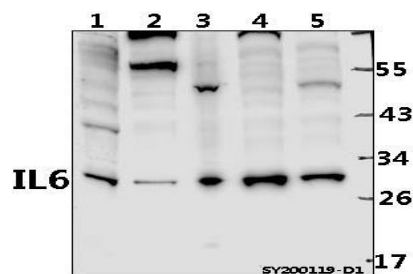
### Storage&Stability:

Store at 4 °C short term. Aliquot and store at -20 °C long term. Avoid freeze-thaw cycles.

### Specificity:

IL6 polyclonal antibody detects endogenous levels of IL6 protein.

### DATA:



Western blot (WB) analysis of IL6 polyclonal antibody at 1:500 dilution

Lane1:Hela whole cell lysate(40ug)

Lane2:U-87MG whole cell lysate(40ug)

Lane3:HuT78 whole cell lysate(40ug)

Lane4:A549 whole cell lysate(40ug)

Lane5:MCF-7 whole cell lysate(40ug)

### Note:

For research use only, not for use in diagnostic procedure.

### Bioworld Technology, Inc.

Add: 1660 South Highway 100, Suite 500 St. Louis Park, MN 55416, USA.

Email: [info@bioworld.com](mailto:info@bioworld.com)

Tel: 6123263284

Fax: 6122933841

### Bioworld technology, co. Ltd.

Add: No 9, weidi road Qixia District Nanjing, 210046, P. R. China.

Email: [info@biogot.com](mailto:info@biogot.com)

Tel: 0086-025-68037686

Fax: 0086-025-68035151