

GPR87 polyclonal antibody

Catalog: BS61880

Host: Rabbit

Reactivity: Human

BackGround:

G protein-coupled receptors play a role in cell communication. They are characterized by an extracellular N terminus, 7 transmembrane regions, and an intracellular C terminus. GPR87/GPR95 has been reported to be expressed in human prostate and rat stomach and fetal tissues. ESTs have been isolated from B-cell/lung/testis, breast, heart, jaw, prostate, and testis libraries.

Product:

Rabbit IgG, 1mg/ml in PBS with 0.02% sodium azide, 50% glycerol, pH7.2

Molecular Weight:

~ 41 kDa

Swiss-Prot:

Q9BY21

Purification&Purity:

The antibody was affinity-purified from rabbit antiserum by affinity-chromatography using epitope-specific immunogen and the purity is > 95% (by SDS-PAGE).

Applications:

WB: 1:500~1:1000

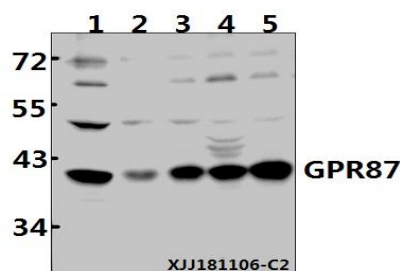
Storage&Stability:

Store at 4 °C short term. Aliquot and store at -22 °C long term. Avoid freeze-thaw cycles.

Specificity:

GPR87 polyclonal antibody detects endogenous levels of GPR87 protein.

DATA:



Western blot (WB) analysis of GPR87 polyclonal antibody at 1:500 dilution

Lane1:Myla2059 whole cell lysate(40 µg)

Lane2:PC3 whole cell lysate(40 µg)

Lane3:A549 whole cell lysate(40 µg)

Lane4:DLD whole cell lysate(40 µg)

Lane5:HepG2 whole cell lysate(40 µg)

Note:

For research use only, not for use in diagnostic procedure.

Bioworld Technology, Inc.

Add: 1660 South Highway 100, Suite 500 St. Louis Park, MN 55416, USA.

Email: info@bioworld.com

Tel: 6123263284

Fax: 6122933841

Bioworld technology, co. Ltd.

Add: No 9, weidi road Qixia District Nanjing, 210046, P. R. China.

Email: info@biogot.com

Tel: 0086-025-68037686

Fax: 0086-025-68035151