

## LDHA polyclonal antibody

Catalog: BS6179

Host: Rabbit

Reactivity: Human, Mouse, Rat

### BackGround:

The lactate dehydrogenase family (LDH) catalyzes the final step of anaerobic glycolysis, the conversion of L-lactate and NAD to pyruvate and NADH. The LDH family consists of three members, LDH-A, LDH-B, and LDH-C, all of which form tetramers consisting four sub-units. However, each family member displays a specific tissue distribution pattern with LDH-A and LDH-B pre-dominant in several tissues, specifically LDH-A in muscle and LDH-B in heart, while LDH-C expression is confined to the testis and sperm. LDHs function as powerful markers for germ cell tumors. The genes encoding human LDH-A and LDH-C map to chromosome 11, while the human LDH-B gene maps to chromosome 12. Deficiency in the LDH-A gene is linked to exertional myoglobinuria.

### Product:

Rabbit IgG, 1mg/ml in PBS with 0.02% sodium azide, 50% glycerol, pH7.2

### Molecular Weight:

~ 37 kDa

### Swiss-Prot:

P00338

### Purification&Purity:

The antibody was affinity-purified from rabbit antiserum by affinity-chromatography using epitope-specific immunogen and the purity is > 95% (by SDS-PAGE).

### Applications:

WB, 1:500 - 1:2000 | IHC, 1:10 - 1:100 | IF/ICC, 1:10 - 1:100

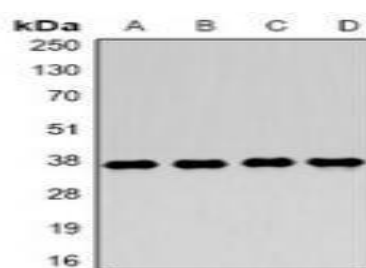
### Storage&Stability:

Store at 4 °C short term. Aliquot and store at -20 °C long term. Avoid freeze-thaw cycles.

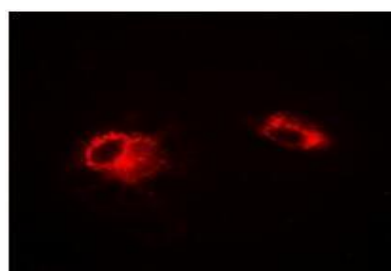
### Specificity:

LDHA polyclonal antibody detects endogenous levels of LDHA protein.

### DATA:



Western blot analysis of LDHA expression in MCF7 (A), Jurkat (B), NIH3T3 (C), mouse skeletal muscle (D) whole cell lysates.



Immunofluorescent analysis of LDHA staining in A549 cells.

### Note:

For research use only, not for use in diagnostic procedure.

### Bioworld Technology, Inc.

Add: 1660 South Highway 100, Suite 500 St. Louis Park, MN 55416, USA.

Email: [info@bioworld.com](mailto:info@bioworld.com)

Tel: 6123263284

Fax: 6122933841

### Bioworld technology, co. Ltd.

Add: No 9, weidi road Qixia District Nanjing, 210046, P. R. China.

Email: [info@biogot.com](mailto:info@biogot.com)

Tel: 0086-025-68037686

Fax: 0086-025-68035151