

ABCF1 polyclonal antibody

Catalog: BS61584

Host: Rabbit

Reactivity: Human, Mouse, Rat

BackGround:

ABCF1 (ATP-binding cassette sub-family F member 1, TNF-alpha-stimulated ABC protein) is a 845 amino acid protein encoded by the human gene ABCF1. ABCF1 belongs to the ABC transporter family (EF3 subfamily) and contains two ABC transporter domains. ABC proteins transport various molecules across extra- and intra-cellular membranes. ABC genes are divided into seven distinct subfamilies (ABC1, MDR/TAP, MRP, ALD, OABP, GCN20, White). Unlike other members of the superfamily, this protein lacks the transmembrane domains which are characteristic of most ABC transporters. ABCF1 is believed to have a role in mRNA translation due to its interaction with eukaryotic initiation factor 2 (eIF2). It is also associated with ribosomes. ABCF1 is ubiquitously expressed and can be induced with TNF. Upon DNA damage, ABCF1 is phosphorylated by either ATM or ATR.

Product:

Rabbit IgG, 1mg/ml in PBS with 0.02% sodium azide, 50% glycerol, pH7.2

Molecular Weight:

~ 105 kDa

Swiss-Prot:

Q8NE71

Purification&Purity:

The antibody was affinity-purified from rabbit antiserum by affinity-chromatography using epitope-specific immunogen and the purity is > 95% (by SDS-PAGE)

Applications:

WB: 1:500~1:1000

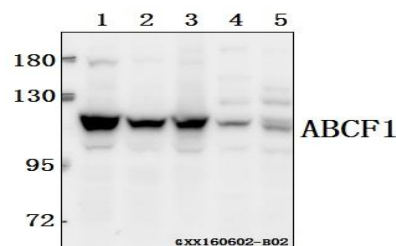
Storage&Stability:

Store at 4 °C short term. Aliquot and store at -20 °C long term. Avoid freeze-thaw cycles.

Specificity:

ABCF1 polyclonal antibody detects endogenous levels of ABCF1 protein.

DATA:



Western blot (WB) analysis of ABCF1 polyclonal antibody at 1:500 dilution

Lane1:SGC7901 whole cell lysate(40ug)

Lane2:HCT116 whole cell lysate(40ug)

Lane3:HCC827 whole cell lysate(40ug)

Lane4:The Testis tissue lysate of Mouse(40ug)

Lane5:The Testis tissue lysate of Rat(40ug)

Note:

For research use only, not for use in diagnostic procedure.

Bioworld Technology, Inc.

Add: 1660 South Highway 100, Suite 500 St. Louis Park, MN 55416, USA.

Email: info@bioworld.com

Tel: 6123263284

Fax: 6122933841

Bioworld technology, co. Ltd.

Add: No 9, weidi road Qixia District Nanjing, 210046, P. R. China.

Email: info@biogot.com

Tel: 0086-025-68037686

Fax: 0086-025-68035151