

MYH8 polyclonal antibody

Catalog: BS61311

Host: Rabbit

Reactivity: Human,Rat,Mouse

BackGround:

Actin is a highly conserved protein that is expressed in all eukaryotic cells. Actin filaments can form both stable and labile structures, and are crucial components of microvilli and the contractile apparatus of muscle cells. Myosin is a hexamer of two heavy chains (MHC) and four light chains (MLC) that interact with Actin to generate the force for diverse cellular movements, including cytokinesis, phagocytosis and muscle contraction. MYH3 (Myosin heavy chain 3), also known as muscle embryonic Myosin heavy chain or SMHCE, is a 1,940 amino acid that localizes to the thick filaments of myofibrils. While highly expressed in fetal skeletal muscle, MYH3 is barely detectable in adult skeletal muscle. Defects in the gene encoding MYH3, which maps to human chromosome 17p13.1, are the cause of distal arthrogyposis type 2B (DA2B).

Product:

Rabbit IgG, 1mg/ml in PBS with 0.02% sodium azide, 50% glycerol, pH7.2

Molecular Weight:

~ 223 kDa

Swiss-Prot:

P13535

Purification&Purity:

The antibody was affinity-purified from rabbit antiserum

by affinity-chromatography using epitope-specific immunogen and the purity is > 95% (by SDS-PAGE).

Applications:

WB: 1:500~1:1000

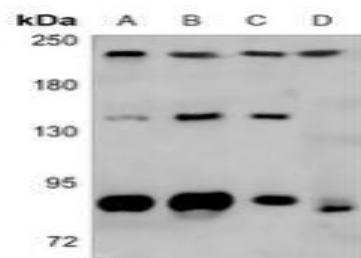
Storage&Stability:

Store at 4 °C short term. Aliquot and store at -20 °C long term. Avoid freeze-thaw cycles.

Specificity:

MYH8 polyclonal antibody detects endogenous levels of MYH8 protein.

DATA:



Western blot analysis of MYH8 expression in HEK293T (A), H1792 (B), U2OS (C), rat testis (D) whole cell lysates.

Note:

For research use only, not for use in diagnostic procedure.

Bioworld Technology, Inc.

Add: 1660 South Highway 100, Suite 500 St. Louis Park, MN 55416, USA.

Email: info@bioworld.com

Tel: 6123263284

Fax: 6122933841

Bioworld technology, co. Ltd.

Add: No 9, weidi road Qixia District Nanjing, 210046, P. R. China.

Email: info@biogot.com

Tel: 0086-025-68037686

Fax: 0086-025-68035151