

## CATSPER1 polyclonal antibody

Catalog: BS60723

Host: Rabbit

Reactivity: Human, Mouse

### BackGround:

CatSper is an ion transport protein located on the surface of sperm cells. CatSper (for cation channel of sperm) is vital to cAMP-mediated calcium influx in sperm, sperm motility and fertilization. The gene that encodes CatSper maps to human chromosome 11q12.1. The 686 amino acid protein is a single, six-transmembrane-spanning protein of the voltage-dependent  $Ca^{2+}$  channel four-repeat structure and is expressed exclusively in the testis. In CatSper  $-/-$  sperm, neither cAMP nor cGMP elicit a significant  $Ca^{2+}$  influx in both mutant and wild-type sperm. CatSper is localized to the sperm flagellum and CatSper  $-/-$  mice show sluggish and less directed movements. CatSper is required to penetrate the egg, but is not required for egg activation.

### Product:

Rabbit IgG, 1mg/ml in PBS with 0.02% sodium azide, 50% glycerol, pH7.2

### Molecular Weight:

~ 90 kDa

### Swiss-Prot:

Q8NEC5

### Purification&Purity:

The antibody was affinity-purified from rabbit antiserum by affinity-chromatography using epitope-specific immunogen and the purity is > 95% (by SDS-PAGE).

### Applications:

WB: 1:500~1:2000

IP: 1:50~1:200

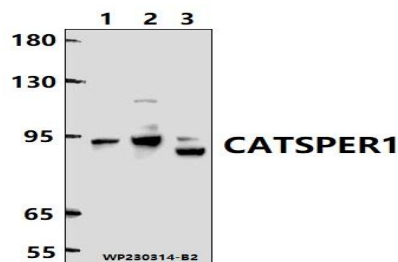
### Storage&Stability:

Store at 4 °C short term. Aliquot and store at -20 °C long term. Avoid freeze-thaw cycles.

### Specificity:

CATSPER1 polyclonal antibody detects endogenous levels of CATSPER1 protein.

### DATA:

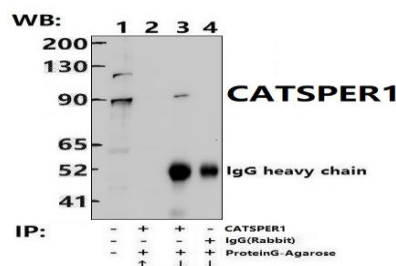


Western blot (WB) analysis of CATSPER1 polyclonal antibody at 1:1000 dilution

Lane1:A549 whole cell lysate

Lane2:Hela whole cell lysate

Lane3:SP2/0 whole cell lysate



Immunoprecipitation of HepG2 cell lysates using CATSPER1 pAb (Sepharose Bead Conjugate)#BD0048 (lane 2 and lane 3) and Nonspecific IgG Control (Sepharose Bead Conjugate)#BD0048 (lane 4). Lane 1 is 30% input. The western blot was probed using CATSPER1 pAb.

### Note:

For research use only, not for use in diagnostic procedure.

### Bioworld Technology, Inc.

Add: 1660 South Highway 100, Suite 500 St. Louis Park, MN 55416, USA.

Email: [info@bioworld.com](mailto:info@bioworld.com)

Tel: 6123263284

Fax: 6122933841

### Bioworld technology, co. Ltd.

Add: No 9, weidi road Qixia District Nanjing, 210046, P. R. China.

Email: [info@biogot.com](mailto:info@biogot.com)

Tel: 0086-025-68037686

Fax: 0086-025-68035151