

MAPK13 polyclonal antibody

Catalog: BS60613

Host: Rabbit

Reactivity: Human, Mouse, Rat

BackGround:

Lipopolysaccharide has been shown to induce tyrosine phosphorylation of a unique protein, which is designated p38. p38 is a member of the MAP kinase family with features most closely resembling those of the Saccharomyces cerevisiae protein Hog1. p38 and Hog1 share a TGY phosphorylation sequence, whereas most other MAP kinase family proteins have a TEY sequence. A related protein, p38b, has been shown to phosphorylate ATF-2 at a 20-fold higher rate than p38, suggesting distinct substrate preferences. Stress activated protein kinase-4, or SAPK4, also designated p38d, is a related protein that is phosphorylated by MKK6 in response to cytokines and cellular stresses.

Product:

Rabbit IgG, 1mg/ml in PBS with 0.02% sodium azide, 50% glycerol, pH7.2

Molecular Weight:

~ 42 kDa

Swiss-Prot:

O15264

Purification&Purity:

The antibody was affinity-purified from rabbit antiserum by affinity-chromatography using epitope-specific immunogen and the purity is > 95% (by SDS-PAGE).

Applications:

WB: 1:500~1:1000

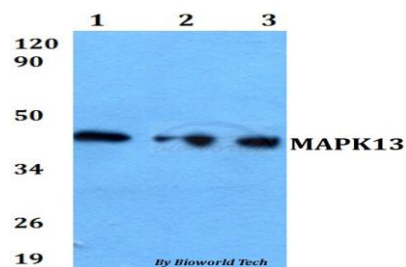
Storage&Stability:

Store at 4 °C short term. Aliquot and store at -20 °C long term. Avoid freeze-thaw cycles.

Specificity:

MAPK13 polyclonal antibody detects endogenous levels of MAPK13 protein.

DATA:



Western blot (WB) analysis of MAPK13 polyclonal antibody at 1:500 dilution

Lane1:A549 whole cell lysate

Lane2:sp2/0 whole cell lysate

Lane3:H9C2 whole cell lysate

Note:

For research use only, not for use in diagnostic procedure.

Bioworld Technology, Inc.

Add: 1660 South Highway 100, Suite 500 St. Louis Park, MN 55416, USA.

Email: info@bioworld.com

Tel: 6123263284

Fax: 6122933841

Bioworld technology, co. Ltd.

Add: No 9, weidi road Qixia District Nanjing, 210046, P. R. China.

Email: info@biogot.com

Tel: 0086-025-68037686

Fax: 0086-025-68035151