

AChRα7 polyclonal antibody

Catalog: BS60391-B

Host: Rabbit

Reactivity: Human, Mouse, Rat

BackGround:

Chromosome 15 encodes over 700 genes and comprises nearly 3% of the human genome. CHRFA7A, a fusion protein comprised of FAM7A and AChRα7, is encoded by the CHRFA7A gene, which is located on a region of human chromosome 15 that is associated with several neuropsychiatric disorders, such as schizophrenia and bipolar affective disorder. CHRFA7A, also known as D-10 or CHRNA7, is a 412 amino acid multi-pass membrane protein that belongs to the nicotinic acetylcholine receptor (nAChR) subfamily of ligand-gated ion channel proteins, a protein superfamily that mediates signal transmission at synapses. CHRFA7A is expressed in the hippocampus. Alternative splicing of the CHRFA7A gene produces two splice variants.

Product:

Rabbit IgG, 1mg/ml in PBS with 0.02% sodium azide, 50% glycerol, pH7.2

Molecular Weight:

~ 56 kDa

Swiss-Prot:

P36544/Q494W8

Purification&Purity:

The antibody was affinity-purified from rabbit antiserum by affinity-chromatography using epitope-specific immunogen and the purity is > 95% (by SDS-PAGE).

Applications:

WB: 1:500~1:1000

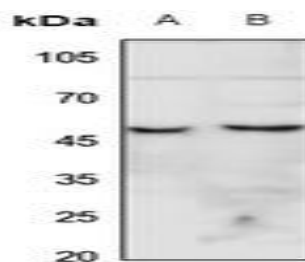
Storage&Stability:

Store at 4 °C short term. Aliquot and store at -20 °C long term. Avoid freeze-thaw cycles.

Specificity:

AChRα7 polyclonal antibody detects endogenous levels of AChRα7 protein.

DATA:



Western blot (WB) analysis of AChRα7 pAb at 1:500 dilution

LaneA:The Liver tissue lysate of Mouse(40ug)

LaneB:The Liver tissue lysate of Rat(40ug)

Note:

For research use only, not for use in diagnostic procedure.

Bioworld Technology, Inc.

Add: 1660 South Highway 100, Suite 500 St. Louis Park, MN 55416, USA.

Email: info@bioworld.com

Tel: 6123263284

Fax: 6122933841

Bioworld technology, co. Ltd.

Add: No 9, weidi road Qixia District Nanjing, 210046, P. R. China.

Email: info@biogot.com

Tel: 0086-025-68037686

Fax: 0086-025-68035151