

## CaMKII $\beta$ polyclonal antibody

Catalog: BS60317

Host: Rabbit

Reactivity: Human, Mouse, Rat

### BackGround:

The Ca<sup>2+</sup>/calmodulin-dependent protein kinases (CaM kinases) comprise a structurally related subfamily of serine/threonine kinases which include CaMKI, CaMKII and CaMKIV. CaMKII is an ubiquitously expressed serine/threonine protein kinase that is activated by Ca<sup>2+</sup> and calmodulin (CaM) and has been implicated in regulation of the cell cycle and transcription. There are four CaMKII isozymes, designated  $\alpha$ ,  $\beta$ ,  $\gamma$  and  $\delta$ , which may or may not be coexpressed in the same tissue type. CaMKIV is stimulated by Ca<sup>2+</sup> and CaM but also requires phosphorylation by a CaMK for full activation.

### Product:

1 mg/ml in Phosphate buffered saline (PBS) with 0.05% sodium azide, approx. pH 7.2.

### Molecular Weight:

~ 50~80 kDa

### Swiss-Prot:

Q13554

### Purification&Purity:

The antibody was affinity-purified from rabbit antiserum by affinity-chromatography using epitope-specific immunogen and the purity is > 95% (by SDS-PAGE).

### Applications:

WB: 1:500~1:1000

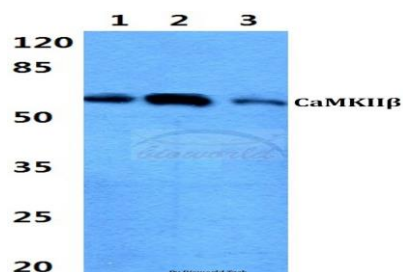
### Storage&Stability:

Store at 4 °C short term. Aliquot and store at -20 °C long term. Avoid freeze-thaw cycles.

### Specificity:

CaMKII $\beta$  polyclonal antibody detects endogenous levels of CaMKII $\beta$  protein.

### DATA:



Western blot (WB) analysis of CaMKII $\beta$  polyclonal antibody at 1:500 dilution

Lane1:Hela cell lysate

Lane2:sp2/0 cell lysate

Lane3:PC12 cell lysate

### Note:

For research use only, not for use in diagnostic procedure.

### Bioworld Technology, Inc.

Add: 1660 South Highway 100, Suite 500 St. Louis Park, MN 55416, USA.

Email: [info@bioworld.com](mailto:info@bioworld.com)

Tel: 6123263284

Fax: 6122933841

### Bioworld technology, co. Ltd.

Add: No 9, weidi road Qixia District Nanjing, 210046, P. R. China.

Email: [info@biogol.com](mailto:info@biogol.com)

Tel: 0086-025-68037686

Fax: 0086-025-68035151