

## KIR4.1 polyclonal antibody

Catalog: BS60116-B

Host: Rabbit

Reactivity: Human,Rat,Mouse

### BackGround:

The KIR (for inwardly rectifying potassium channel) family of potassium channels possess a greater tendency to allow potassium to flow into the cell rather than out of it. KIR4.1, also known as Kir1.2, is highly expressed in brain including glial cells, astrocytes and cortical neurons. KIR4.1 is also expressed in myelin-synthesizing oligodendrocytes and is crucial to myelination in the developing nervous system. The gene encoding human KIR4.1 maps to chromosome 1. KIR4.2, also known as Kir1.3, is expressed in kidney, lung, heart, thymus and thyroid during development. The gene encoding human KIR4.2 maps to chromosome 21 in the Down syndrome chromosome region 1, and KIR4.2 may play a role in the pathogenesis of Down's syndrome. KIR5.1 forms functional channels only by coexpression with either KIR4.1 or KIR4.2 in the kidney and pancreas.

### Product:

Rabbit IgG, 1mg/ml in PBS with 0.02% sodium azide, 50% glycerol, pH7.4.

### Molecular Weight:

~ 45 kDa

### Swiss-Prot:

P78508

### Purification&Purity:

The antibody was affinity-purified from rabbit antiserum by affinity-chromatography using epitope-specific immunogen and the purity is > 95% (by SDS-PAGE).

### Applications:

WB: 1:500~1:2000

IHC: 1:50~1:100

### Storage&Stability:

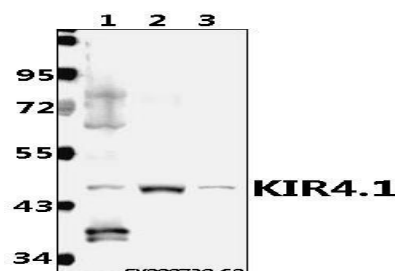
Store at 4 °C short term. Aliquot and store at -20 °C long

term. Avoid freeze-thaw cycles.

### Specificity:

KIR4.1 polyclonal antibody detects endogenous levels of KIR4.1 protein.

### DATA:

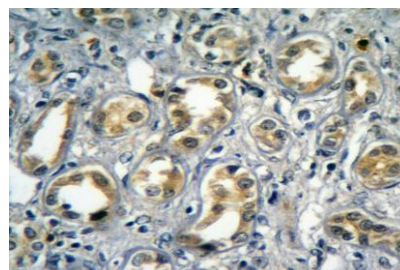


Western blot (WB) analysis of KIR4.1 polyclonal antibody at 1:2000 dilution

Lane1:HEK293T whole cell lysate(40ug)

Lane2:The Kidney tissue lysate of Rat(40ug)

Lane3:The Brain tissue lysate of Mouse(40ug)



Immunohistochemistry of paraffin-embedded Human Kidney cancer tissue using KIR4.1 antibody at dilution of 1:20 (x40 lens).

### Note:

For research use only, not for use in diagnostic procedure.

### Bioworld Technology, Inc.

Add: 1660 South Highway 100, Suite 500 St. Louis Park, MN 55416, USA.

Email: [info@bioworld.com](mailto:info@bioworld.com)

Tel: 6123263284

Fax: 6122933841

### Bioworld technology, co. Ltd.

Add: No 9, weidi road Qixia District Nanjing, 210046, P. R. China.

Email: [info@biogol.com](mailto:info@biogol.com)

Tel: 0086-025-68037686

Fax: 0086-025-68035151