

SR-1D polyclonal antibody

Catalog: BS60073

Host: Rabbit

Reactivity: Human, Mouse, Rat

BackGround:

The members of the G-protein-coupled receptor family are distinguished by their slow transmitting response to ligand binding. These seven transmembrane proteins include the adrenergic, serotonin and dopamine receptors. The effect of the signaling molecule can be excitatory or inhibitory depending on the type of receptor to which it binds. beta-adrenergic bound to adrenaline activates adenylyl cyclase, while alpha2-adrenergic receptor bound to adrenaline inhibits adenylyl cyclase. Like the alpha2-adrenergic receptor, serotonin receptor functions are also mediated by G proteins that inhibit the activity of adenylyl cyclase. The serotonin receptors have been classified into several categories, designated SR-1-7 (5HT1-7). Subtypes within the SR-1 group include SR-1A, -1B, -1D, -1E and -1F.

Product:

Rabbit IgG, 1mg/ml in PBS with 0.02% sodium azide, 50% glycerol, pH7.2

Molecular Weight:

~ 42-45 kDa

Swiss-Prot:

P28221

Purification&Purity:

The antibody was affinity-purified from rabbit antiserum by affinity-chromatography using epitope-specific immunogen and the purity is > 95% (by SDS-PAGE).

Applications:

WB: 1:500~1:1000

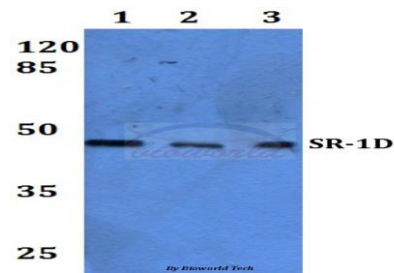
Storage&Stability:

Store at 4 °C short term. Aliquot and store at -20 °C long term. Avoid freeze-thaw cycles.

Specificity:

SR-1D polyclonal antibody detects endogenous levels of SR-1D protein.

DATA:



Western blot (WB) analysis of SR-1D polyclonal antibody at 1:500 dilution

Lane1:MCF-7 whole cell lysate

Lane2:Raw264.7 whole cell lysate

Lane3:H9C2 whole cell lysate

Note:

For research use only, not for use in diagnostic procedure.

Bioworld Technology, Inc.

Add: 1660 South Highway 100, Suite 500 St. Louis Park, MN 55416, USA.

Email: info@bioworld.com

Tel: 6123263284

Fax: 6122933841

Bioworld technology, co. Ltd.

Add: No 9, weidi road Qixia District Nanjing, 210046, P. R. China.

Email: info@biogot.com

Tel: 0086-025-68037686

Fax: 0086-025-68035151