

ARHGEF1 polyclonal antibody

Catalog: BS5901

Host: Rabbit

Reactivity: Human, Mouse, Rat

BackGround:

The Ras superfamily of GTPases, which can be subdivided into the Ras, Rho/Rac, Sar, Rab, ARF and Ran subfamilies, controls multiple aspects of cell function, including cytoskeletal rearrangement, nuclear signaling and cell growth. The Ras superfamily of GTPases function as regulated switches that toggle between a biologically active GTP-bound and an inactive GDP-bound form. This activation is catalyzed by guanine nucleotide exchange factors (GEFs). The Dbl-related proteins are a large family of structurally related molecules that have a common ability to catalyze GEF activity for specific members of the Ras family. Dbl-related proteins include FGD1, Lsc, RhoGEF p115, Lfc, Lbc and Brx. Lsc, Lbc and Lfc share sequence homology and show exchange activity toward Rho family GTPases. RhoGEF p115 catalyzes GEF activity for Rho but not Rac, Cdc42 or Ras GTPases.

Product:

Rabbit IgG, 1mg/ml in PBS with 0.02% sodium azide, 50% glycerol, pH7.2

Molecular Weight:

~ 115 kDa

Swiss-Prot:

Q92888

Purification&Purity:

The antibody was affinity-purified from rabbit antiserum by affinity-chromatography using epitope-specific immunogen and the purity is > 95% (by SDS-PAGE).

Applications:

WB: 1:500~1:1000

ICC: 1:50~1:200

IP: 1:50~1:200

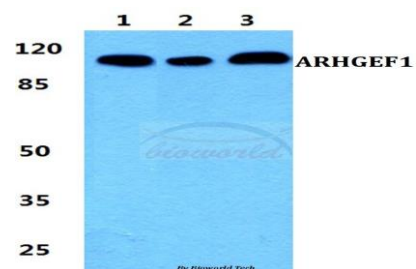
Storage&Stability:

Store at 4 °C short term. Aliquot and store at -20 °C long term. Avoid freeze-thaw cycles.

Specificity:

ARHGEF1 polyclonal antibody detects endogenous levels of ARHGEF1 protein.

DATA:



Western blot (WB) analysis of ARHGEF1 polyclonal antibody at 1:500 dilution

Lane1:Hela cell lysate

Lane2:Raw264.7 cell lysate

Lane3:H9C2 cell lysate

Note:

For research use only, not for use in diagnostic procedure.

Bioworld Technology, Inc.

Add: 1660 South Highway 100, Suite 500 St. Louis Park, MN 55416, USA.

Email: info@bioworld.com

Tel: 6123263284

Fax: 6122933841

Bioworld technology, co. Ltd.

Add: No 9, weidi road Qixia District Nanjing, 210046, P. R. China.

Email: info@biogot.com

Tel: 0086-025-68037686

Fax: 0086-025-68035151