

Na⁺ CP type IV α polyclonal antibody

Catalog: BS5812

Host: Rabbit

Reactivity: Human, Mouse, Rat

Background:

Voltage-gated sodium channels are selective ion channels that regulate the permeability of sodium ions in excitable cells. During the propagation of an action potential, sodium channels allow an influx of sodium ions, which rapidly depolarize the cell. The three glycoproteins that comprise the voltage-gated sodium channel proteins include a pore-forming α subunit, a noncovalently associated β 1 subunit and a disulfide-linked β 2 subunit. The two β subunits regulate the level of channel expression, modulate gating and function as cell adhesion molecules for cellular aggregation and cytoskeleton interaction. The α subunits of sodium channels type I and III are predominantly expressed in neuronal cell bodies and proximal processes, while type II α subunits are more abundant along axons. The β 1 subunit of sodium channel type I is expressed in brain, skeletal and cardiac muscle. In the brain, β 1 and β 2 are highly expressed in Purkinje cells, and β 1 is also expressed in the pyramidal cells of the deep cerebellar nuclei. Impaired voltage-gated sodium channels lead to a number of diseases including myotonia.

Product:

Rabbit IgG, 1mg/ml in PBS with 0.02% sodium azide, 50% glycerol, pH7.2

Molecular Weight:

~ 208 kDa

Swiss-Prot:

P35499

Purification&Purity:

The antibody was affinity-purified from rabbit antiserum

by affinity-chromatography using epitope-specific immunogen and the purity is > 95% (by SDS-PAGE).

Applications:

WB: 1:500~1:1000

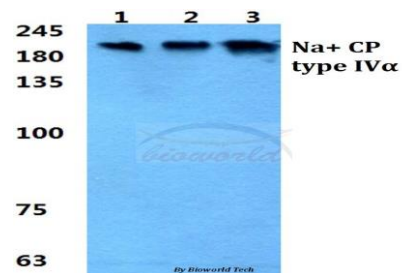
Storage&Stability:

Store at 4 °C short term. Aliquot and store at -20 °C long term. Avoid freeze-thaw cycles.

Specificity:

Na⁺ CP type IV α polyclonal antibody detects endogenous levels of Na⁺ CP type IV α protein.

DATA:



Western blot (WB) analysis of Na⁺ CP type IV α polyclonal antibody at 1:500 dilution

Lane1:MCF-7 cell lysate

Lane2:NIH-3T3 cell lysate

Lane3:H9C2 cell lysate

Note:

For research use only, not for use in diagnostic procedure.

Bioworld Technology, Inc.

Add: 1660 South Highway 100, Suite 500 St. Louis Park, MN 55416, USA.

Email: info@bioworld.com

Tel: 6123263284

Fax: 6122933841

Bioworld technology, co. Ltd.

Add: No 9, weidi road Qixia District Nanjing, 210046, P. R. China.

Email: info@biogot.com

Tel: 0086-025-68037686

Fax: 0086-025-68035151