

## MYL7 polyclonal antibody

Catalog: BS5808

Host: Rabbit

Reactivity: Human, Mouse, Rat

### BackGround:

Encoded by the MYL7 gene, myosin regulatory light chain 7, also designated Myosin regulatory light chain 2, atrial isoform (MLC-2a), is part of a hexameric complex of two heavy chains and four light chains predominantly expressed in adult atrial muscle. Myosin regulatory light chain 7 binds calcium and has been shown to be a useful molecular marker for cardiac chamber specification. The co-expression of myosin regulatory light chain 7 and myosin light chain 2 (MLC2v) in the outflow tract and atrioventricular canal, together with the single expression in the atrial (MYL7) and ventricular (MYL2) myo-cardium, permits the delineation of their boundaries. At the amino acid level there is 95% homology between the human and mouse myosin regulatory light chain 7 sequences.

### Product:

Rabbit IgG, 1mg/ml in PBS with 0.02% sodium azide, 50% glycerol, pH7.2

### Molecular Weight:

~ 19 kDa

### Swiss-Prot:

Q01449

### Purification&Purity:

The antibody was affinity-purified from rabbit antiserum by affinity-chromatography using epitope-specific immunogen and the purity is > 95% (by SDS-PAGE).

### Applications:

WB: 1:500~1:1000

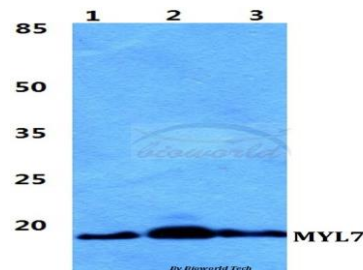
### Storage&Stability:

Store at 4 °C short term. Aliquot and store at -20 °C long term. Avoid freeze-thaw cycles.

### Specificity:

MYL7 polyclonal antibody detects endogenous levels of MYL7 protein.

### DATA:



Western blot (WB) analysis of MYL7 polyclonal antibody at 1:500 dilution

Lane1:MCF-7 cell lysate

Lane2:sp2/0 cell lysate

Lane3:H9C2 cell lysate

### Note:

For research use only, not for use in diagnostic procedure.

### Bioworld Technology, Inc.

Add: 1660 South Highway 100, Suite 500 St. Louis Park, MN 55416, USA.

Email: [info@bioworld.com](mailto:info@bioworld.com)

Tel: 6123263284

Fax: 6122933841

### Bioworld technology, co. Ltd.

Add: No 9, weidi road Qixia District Nanjing, 210046, P. R. China.

Email: [info@biogot.com](mailto:info@biogot.com)

Tel: 0086-025-68037686

Fax: 0086-025-68035151