

## MTERF polyclonal antibody

Catalog: BS5804

Host: Rabbit

Reactivity: Human, Mouse, Rat

### BackGround:

Members of the mTERF family, including MTERF, MTERFD1, MTERFD2 and MTERFD3, are mitochondrial proteins that are believed to be transcription termination factors. MTERF (mitochondrial transcription termination factor 1) is composed of 399 amino acids and contains three leucine zippers that form a three-stranded coiled-coil that binds to DNA. It has been suggested that only the phosphorylated form of MTERF has transcription termination activity. MTERFD1 is also thought to act as a mitochondrial transcription regulator and is expressed as two isoforms produced by alternative splicing. MTERFD3 is believed to be involved in cell cycle regulation and cell growth by modulating mitochondrial transcription. MTERFD3 is expressed in heart, skeletal muscle, pancreas and liver.

### Product:

Rabbit IgG, 1mg/ml in PBS with 0.02% sodium azide, 50% glycerol, pH7.2

### Molecular Weight:

~ 39, 45 kDa

### Swiss-Prot:

Q99551

### Purification&Purity:

The antibody was affinity-purified from rabbit antiserum by affinity-chromatography using epitope-specific immunogen and the purity is > 95% (by SDS-PAGE).

### Applications:

WB: 1:500~1:1000

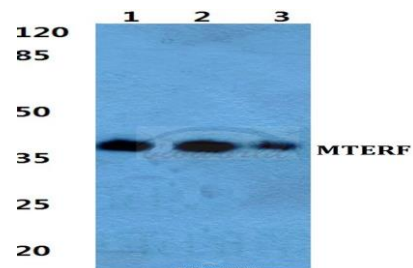
### Storage&Stability:

Store at 4 °C short term. Aliquot and store at -20 °C long term. Avoid freeze-thaw cycles.

### Specificity:

MTERF polyclonal antibody detects endogenous levels of MTERF protein.

### DATA:



Western blot (WB) analysis of MTERF polyclonal antibody at 1:500 dilution

Lane1:Hela cell lysate

Lane2:Raw264.7 cell lysate

Lane3:PC12 cell lysate

### Note:

For research use only, not for use in diagnostic procedure.

### Bioworld Technology, Inc.

Add: 1660 South Highway 100, Suite 500 St. Louis Park, MN 55416, USA.

Email: [info@bioworld.com](mailto:info@bioworld.com)

Tel: 6123263284

Fax: 6122933841

### Bioworld technology, co. Ltd.

Add: No 9, weidi road Qixia District Nanjing, 210046, P. R. China.

Email: [info@biogot.com](mailto:info@biogot.com)

Tel: 0086-025-68037686

Fax: 0086-025-68035151