

## CFI polyclonal antibody

Catalog: BS5716

Host: Rabbit

Reactivity: Human, Mouse, Rat

### BackGround:

The complement pathway is an important host defense system that contributes to both innate and acquired immunity. There are three pathways of complement activation: the classical pathway, lectin pathway and alternative pathway. Complement protein Factor I is a key serine protease that modulates the complement cascade by regulating the levels of C3 convertases. It circulates in plasma as a heavily N-glycosylated heterodimer made up of two disulfide linked chains, each carrying three N-linked oligosaccharide chains that may have both structural and functional roles in the interactions with the natural substrate and the cofactor during catalysis. Factor I is a serine protease with a high degree of specificity for C3b and C4b. It requires protein cofactors for cleavage of these complement proteins; Factor H, CR1 or MCP are required for C3b cleavage, and C4bp or CR1 are required for C4b cleavage.

### Product:

Rabbit IgG, 1mg/ml in PBS with 0.02% sodium azide, 50% glycerol, pH7.2

### Molecular Weight:

~ 88 kDa (Pro), 38 kDa (Light chain)

### Swiss-Prot:

P05156

### Purification&Purity:

The antibody was affinity-purified from rabbit antiserum by affinity-chromatography using epitope-specific im-

munogen and the purity is > 95% (by SDS-PAGE).

### Applications:

WB: 1:500~1:1000

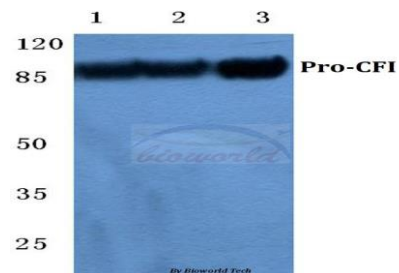
### Storage&Stability:

Store at 4 °C short term. Aliquot and store at -20 °C long term. Avoid freeze-thaw cycles.

### Specificity:

CFI polyclonal antibody detects endogenous levels of CFI protein.

### DATA:



Western blot (WB) analysis of CFI polyclonal antibody at 1:500 dilution

Lane1:HEK293T cell lysate

Lane2:Raw264.7 cell lysate

Lane3:PC12 cell lysate

### Note:

For research use only, not for use in diagnostic procedure.

### Bioworld Technology, Inc.

Add: 1660 South Highway 100, Suite 500 St. Louis Park, MN 55416, USA.

Email: [info@bioworld.com](mailto:info@bioworld.com)

Tel: 6123263284

Fax: 6122933841

### Bioworld technology, co. Ltd.

Add: No 9, weidi road Qixia District Nanjing, 210046, P. R. China.

Email: [info@biogot.com](mailto:info@biogot.com)

Tel: 0086-025-68037686

Fax: 0086-025-68035151