

DNA pol ϵ 2 polyclonal antibody

Catalog: BS5700

Host: Rabbit

Reactivity: Human, Mouse, Rat

Background:

DNA replication, recombination and repair, all of which are necessary for genome stability, require the presence of exonucleases. In DNA replication, these enzymes are involved in the processing of Okazaki fragments, whereas in DNA repair, they function to excise damaged DNA fragments and correct recombinational mismatches. Exonucleases involved in these processes include DNA polymerases, including DNA pol δ and ϵ . DNA pol δ consists of two subunits-p125 which interacts directly with the sliding DNA clamp protein PCNA, and p50. DNA pol δ can be regulated by cell cycle proteins. DNA pol ϵ is a multiple subunit enzyme, the catalytic subunit of which is encoded by the POL2 gene. The exact reactions catalyzed by DNA pol δ and ϵ on leading and lagging strands have not yet been elucidated.

Product:

Rabbit IgG, 1mg/ml in PBS with 0.02% sodium azide, 50% glycerol, pH7.2

Molecular Weight:

~ 60 kDa

Swiss-Prot:

P56282

Purification&Purity:

The antibody was affinity-purified from rabbit antiserum by affinity-chromatography using epitope-specific immunogen and the purity is > 95% (by SDS-PAGE).

Applications:

WB: 1:500~1:1000

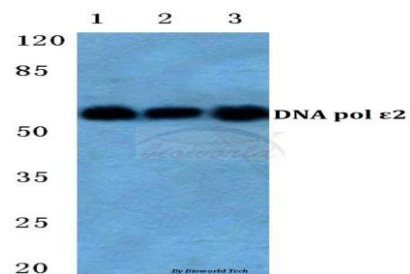
Storage&Stability:

Store at 4 °C short term. Aliquot and store at -20 °C long term. Avoid freeze-thaw cycles.

Specificity:

DNA pol ϵ 2 polyclonal antibody detects endogenous levels of DNA pol ϵ 2 protein.

DATA:



Western blot (WB) analysis of DNA pol ϵ 2 polyclonal antibody at 1:500 dilution

Lane1:MCF-7 cell lysate

Lane2:sp2/0 cell lysate

Lane3:PC12 cell lysate

Note:

For research use only, not for use in diagnostic procedure.

Bioworld Technology, Inc.

Add: 1660 South Highway 100, Suite 500 St. Louis Park, MN 55416, USA.

Email: info@bioworld.com

Tel: 6123263284

Fax: 6122933841

Bioworld technology, co. Ltd.

Add: No 9, weidi road Qixia District Nanjing, 210046, P. R. China.

Email: info@biogot.com

Tel: 0086-025-68037686

Fax: 0086-025-68035151