

SLC28A2 polyclonal antibody

Catalog: BS5670

Host: Rabbit

Reactivity: Human, Mouse, Rat

BackGround:

The concentrative nucleoside transporter (CNT) family comprises three members: CNT1, CNT2 and CNT3. CNT2 participates in the absorption and disposition of endogenous nucleosides and mediates the first step of nucleotide biosynthesis. CNT2 levels are highly dependent on insulin (but not glucose) concentration, and the protein is under the control of the Adenosine 1 receptor. CNT family members are imperative in the response of cells to a variety of anticancer and antiviral nucleoside analogs, as the CNT proteins modulate their entry into target tissues. Increasing evidence also suggests that CNT2 may have a role in energy metabolism because activation of CNT2 relies on the opening of ATP-sensitive K⁺ channels.

Product:

Rabbit IgG, 1mg/ml in PBS with 0.02% sodium azide, 50% glycerol, pH7.2

Molecular Weight:

~ 72 kDa

Swiss-Prot:

O43868

Purification&Purity:

The antibody was affinity-purified from rabbit antiserum by affinity-chromatography using epitope-specific immunogen and the purity is > 95% (by SDS-PAGE).

Applications:

WB: 1:500~1:1000

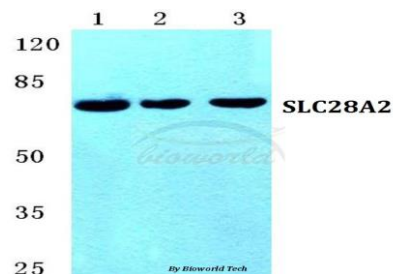
Storage&Stability:

Store at 4 °C short term. Aliquot and store at -20 °C long term. Avoid freeze-thaw cycles.

Specificity:

SLC28A2 polyclonal antibody detects endogenous levels of SLC28A2 protein.

DATA:



Western blot (WB) analysis of SLC28A2 polyclonal antibody at 1:500 dilution

Lane1:HepG2 cell lysate

Lane2:sp2/0 cell lysate

Lane3:H9C2 cell lysate

Note:

For research use only, not for use in diagnostic procedure.

Bioworld Technology, Inc.

Add: 1660 South Highway 100, Suite 500 St. Louis Park, MN 55416, USA.

Email: info@bioworld.com

Tel: 6123263284

Fax: 6122933841

Bioworld technology, co. Ltd.

Add: No 9, weidi road Qixia District Nanjing, 210046, P. R. China.

Email: info@biogot.com

Tel: 0086-025-68037686

Fax: 0086-025-68035151