

BMP3 polyclonal antibody

Catalog: BS5629

Host: Rabbit

Reactivity: Human, Mouse, Rat

Background:

Bone morphogenic proteins (BMPs) are members of the TGF β superfamily. BMPs are involved in the induction of cartilage and bone formation. In vivo studies have shown that BMP-2 (also designated BMP-2A) and BMP-3 can independently induce cartilage formation. Smad3 association with the TGF β receptor complex and Smad1 translocation to the nucleus are observed after the addition of BMP-4 (also designated BMP-2B), suggesting that BMP-4 may play a role in activation of the Smad pathway. BMP-5, BMP-6 and BMP-7 all share high sequence homology with BMP-2, indicating that they each may be able to induce cartilage formation. BMP-8 (also designated OP-2) is thought to be involved in early development, as detectable expression has not been found in adult organs.

Product:

Rabbit IgG, 1mg/ml in PBS with 0.02% sodium azide, 50% glycerol, pH7.2

Molecular Weight:

~ 54 kDa

Swiss-Prot:

P12645

Purification&Purity:

The antibody was affinity-purified from rabbit antiserum by affinity-chromatography using epitope-specific immunogen and the purity is > 95% (by SDS-PAGE).

Applications:

WB: 1:500~1:1000

ICC: 1:50~1:200

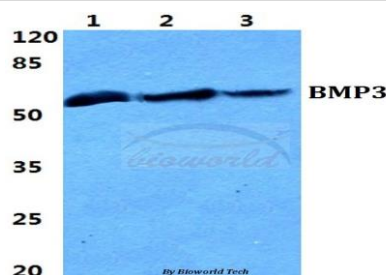
Storage&Stability:

Store at 4 °C short term. Aliquot and store at -20 °C long term. Avoid freeze-thaw cycles.

Specificity:

BMP3 polyclonal antibody detects endogenous levels of BMP3 protein.

DATA:



Western blot (WB) analysis of BMP3 polyclonal antibody at 1:500 dilution

Lane1:HEK293T cell lysate

Lane2:PC12 cell lysate

Lane3:H9C2 cell lysate

Note:

For research use only, not for use in diagnostic procedure.

Bioworld Technology, Inc.

Add: 1660 South Highway 100, Suite 500 St. Louis Park, MN 55416, USA.

Email: info@bioworld.com

Tel: 6123263284

Fax: 6122933841

Bioworld technology, co. Ltd.

Add: No 9, weidi road Qixia District Nanjing, 210046, P. R. China.

Email: info@biogot.com

Tel: 0086-025-68037686

Fax: 0086-025-68035151