

ATP5S polyclonal antibody

Catalog: BS5624

Host: Rabbit

Reactivity: Human, Mouse, Rat

BackGround:

ATP5S, also known as ATP synthase subunits, mitochondrial, ATP synthase-coupling factor B or ATP synthase, H⁺ transporting, mitochondrial F₀ complex, subunits (factor B), is a 215 amino acid mitochondrial inner membrane protein that belongs to the ATP synthase subunits family. Involved in regulation of mitochondrial membrane ATP synthase, ATP5S is necessary for H⁺ conduction of ATP synthase. The ATP5S gene encodes subunits, also known as factor B, of the proton channel. This subunit is necessary for energy transduction in ATP synthase complexes. The ATP5S gene is conserved in chimpanzee, canine, bovine, mouse, rat, chicken, zebrafish and mosquito, and maps to human chromosome 14q21.3.

Product:

Rabbit IgG, 1mg/ml in PBS with 0.02% sodium azide, 50% glycerol, pH7.2

Molecular Weight:

~ 25 kDa

Swiss-Prot:

Q99766

Purification&Purity:

The antibody was affinity-purified from rabbit antiserum by affinity-chromatography using epitope-specific immunogen and the purity is > 95% (by SDS-PAGE).

Applications:

WB: 1:500~1:1000

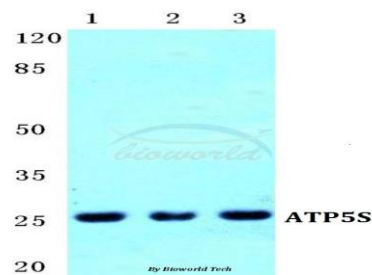
Storage&Stability:

Store at 4 °C short term. Aliquot and store at -20 °C long term. Avoid freeze-thaw cycles.

Specificity:

ATP5S polyclonal antibody detects endogenous levels of ATP5S protein.

DATA:



Western blot (WB) analysis of ATP5S polyclonal antibody at 1:500 dilution

Lane1:MCF-7 cell lysate

Lane2:Mouse lung tissue lysate

Lane3:Rat lung tissue lysate

Note:

For research use only, not for use in diagnostic procedure.

Bioworld Technology, Inc.

Add: 1660 South Highway 100, Suite 500 St. Louis Park, MN 55416, USA.

Email: info@bioworld.com

Tel: 6123263284

Fax: 6122933841

Bioworld technology, co. Ltd.

Add: No 9, weidi road Qixia District Nanjing, 210046, P. R. China.

Email: info@biogot.com

Tel: 0086-025-68037686

Fax: 0086-025-68035151