

ARSE polyclonal antibody

Catalog: BS5621

Host: Rabbit

Reactivity: Human

BackGround:

Arylsulfatase E, also known as CDPX, CDPX1 or CDPXR, is a 589 amino acid Golgi apparatus protein expressed in the pancreas, liver and kidney. Belonging to the sulfatase family, Arylsulfatase E may be essential for the correct composition of cartilage and bone matrix during development. Inhibited by warfarin, Arylsulfatase E activity occurs under optimal pH and temperature. Defects in the gene encoding Arylsulfatase E are the cause of chondrodysplasia punctata X-linked recessive type 1 (CDPX1), which is characterized by aberrant bone mineralization, severe underdevelopment of nasal cartilage and distal phalangeal hypoplasia. Arylsulfatase E has no activity toward steroid sulfates.

Product:

Rabbit IgG, 1mg/ml in PBS with 0.02% sodium azide, 50% glycerol, pH7.2

Molecular Weight:

~ 66 kDa

Swiss-Prot:

P51690

Purification&Purity:

The antibody was affinity-purified from rabbit antiserum by affinity-chromatography using epitope-specific immunogen and the purity is > 95% (by SDS-PAGE).

Applications:

WB: 1:500~1:1000

ICC: 1:50~1:200

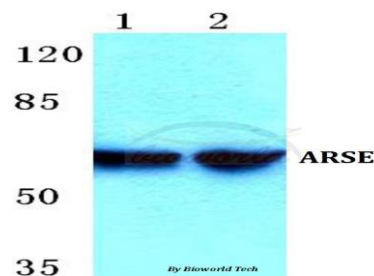
Storage&Stability:

Store at 4 °C short term. Aliquot and store at -20 °C long term. Avoid freeze-thaw cycles.

Specificity:

ARSE polyclonal antibody detects endogenous levels of ARSE protein.

DATA:



Western blot (WB) analysis of ARSE polyclonal antibody at 1:500 dilution

Lane1:Hela cell lysate

Lane2:HEK293T cell lysate

Note:

For research use only, not for use in diagnostic procedure.

Bioworld Technology, Inc.

Add: 1660 South Highway 100, Suite 500 St. Louis Park, MN 55416, USA.

Email: info@bioworld.com

Tel: 6123263284

Fax: 6122933841

Bioworld technology, co. Ltd.

Add: No 9, weidi road Qixia District Nanjing, 210046, P. R. China.

Email: info@biogot.com

Tel: 0086-025-68037686

Fax: 0086-025-68035151