

PHO1 polyclonal antibody

Catalog: BS5613

Host: Rabbit

Reactivity: Human, Mouse, Rat

BackGround:

APOBEC3A (apolipoprotein B mRNA editing enzyme, catalytic polypeptide-like 3A), also known as PHO1 or ARP3 or PHRBN is a 199 amino acid protein that belongs to the cytidine deaminase family. Expressed in keratinocytes, as well as in peripheral leukocytes, APOBEC3A may be implicated in cell growth and cell cycle control. The gene encoding APOBEC3A is one of seven related genes which map to a cluster on chromosome 22 and are thought to play a role in tumor transformation and metastasis, as well as in host-associated antiviral activity. Chromosome 22 houses over 500 genes, some of which are involved in Phelan-McDermid syndrome, schizophrenia and Neurofibromatosis type 2.

Product:

Rabbit IgG, 1mg/ml in PBS with 0.02% sodium azide, 50% glycerol, pH7.2

Molecular Weight:

~ 23 kDa

Swiss-Prot:

P31941

Purification&Purity:

The antibody was affinity-purified from rabbit antiserum by affinity-chromatography using epitope-specific immunogen and the purity is > 95% (by SDS-PAGE).

Applications:

WB: 1:500~1:1000

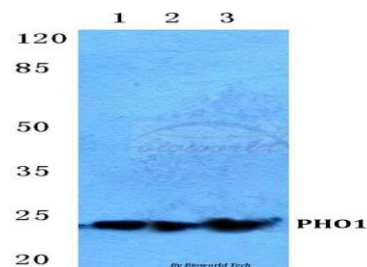
Storage&Stability:

Store at 4 °C short term. Aliquot and store at -20 °C long term. Avoid freeze-thaw cycles.

Specificity:

PHO1 polyclonal antibody detects endogenous levels of PHO1 protein.

DATA:



Western blot (WB) analysis of PHO1 polyclonal antibody at 1:500 dilution

Lane1:HEK293T cell lysate

Lane2:sp2/0 cell lysate

Lane3:H9C2 cell lysate

Note:

For research use only, not for use in diagnostic procedure.

Bioworld Technology, Inc.

Add: 1660 South Highway 100, Suite 500 St. Louis Park, MN 55416, USA.

Email: info@bioworld.com

Tel: 6123263284

Fax: 6122933841

Bioworld technology, co. Ltd.

Add: No 9, weidi road Qixia District Nanjing, 210046, P. R. China.

Email: info@biogot.com

Tel: 0086-025-68037686

Fax: 0086-025-68035151