

ADH7 polyclonal antibody

Catalog: BS5600

Host: Rabbit

Reactivity: Human, Mouse, Rat

Background:

ADH7 (alcohol dehydrogenase 7 (class IV), μ or σ polypeptide), is a 386 amino acid protein belonging to the zinc-containing alcohol dehydrogenase family and the class-IV subfamily. Seven different human ADH isozymes exist: three belong to class-I: α , β and γ ; one to class-II: π ; one to class-III: χ ; one to class-IV: ADH7; and one to class-V: ADH6. Encoded by a gene that maps to human chromosome 4q23, ADH7 localizes to the cytoplasm and is preferentially expressed in stomach, but, unlike other family members, is absent from liver. ADH7 is a homodimer that binds two zinc ions per subunit and contains nine exons. ADH7 participates in the synthesis of retinoic acid, a hormone important for cellular differentiation. Variations in ADH7 may be associated with alcohol dependence. ADH7 may also play a role in protection against aerodigestive tract cancer.

Product:

Rabbit IgG, 1mg/ml in PBS with 0.02% sodium azide, 50% glycerol, pH7.2

Molecular Weight:

~ 40 kDa

Swiss-Prot:

P40394

Purification&Purity:

The antibody was affinity-purified from rabbit antiserum by affinity-chromatography using epitope-specific immunogen and the purity is > 95% (by SDS-PAGE).

Applications:

WB: 1:500~1:1000

IHC: 1:50~1:200

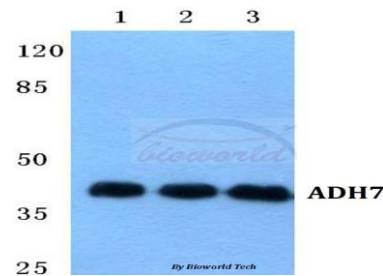
Storage&Stability:

Store at 4 °C short term. Aliquot and store at -20 °C long term. Avoid freeze-thaw cycles.

Specificity:

ADH7 polyclonal antibody detects endogenous levels of ADH7 protein.

DATA:



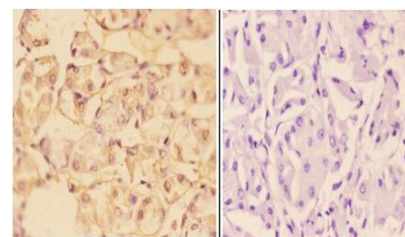
Western blot (WB) analysis of ADH7 polyclonal antibody at 1:500 dilution

Lane1:Hela cell lysate

Lane2:sp2/0 cell lysate

Lane3:PC12 cell lysate

Immunohistochemistry (IHC) analyzes of ADH7 pAb in paraffin-embedded human stomach carcinoma tissue at 1:50, showing cytoplasmic and nuclear staining. Negative control (the right) Using PBS instead of primary antibody, secondary antibody is Goat Anti-Rabbit IgG-biotin followed by avidin-peroxidase.



BS5600
Lot CN75131

Note:

For research use only, not for use in diagnostic procedure.

Bioworld Technology, Inc.

Add: 1660 South Highway 100, Suite 500 St. Louis Park, MN 55416, USA.

Email: info@bioworld.com

Tel: 6123263284

Fax: 6122933841

Bioworld technology, co. Ltd.

Add: No 9, weidi road Qixia District Nanjing, 210046, P. R. China.

Email: info@biogot.com

Tel: 0086-025-68037686

Fax: 0086-025-68035151