

ABCG1 polyclonal antibody

Catalog: BS5596

Host: Rabbit

Reactivity: Human, Mouse, Rat

Background:

ABCG1 (also designated ABC8 or human white gene), a member of the evolutionary conserved family of ATP-binding cassette (ABC) transporters, exhibits high homology with the *Drosophila* white gene. ABC transporters couple the energy of ATP hydrolysis to the translocation of various molecules across biological membranes. These proteins contain characteristic ATP-binding domains and transmembrane domains which form a channel-like structure for transport. ABCG1 functions to regulate cholesterol and phospholipid transport in macrophages. ABCG1 is highly expressed in several tissues, including brain, spleen, lung and placenta, and has been localized to the cell surface and intracellular compartments of cholesterol-laden macrophages.

Product:

Rabbit IgG, 1mg/ml in PBS with 0.02% sodium azide, 50% glycerol, pH7.2

Molecular Weight:

~ 110 kDa

Swiss-Prot:

P45844

Purification&Purity:

The antibody was affinity-purified from rabbit antiserum by affinity-chromatography using epitope-specific immunogen and the purity is > 95% (by SDS-PAGE).

Applications:

WB: 1:500~1:1000

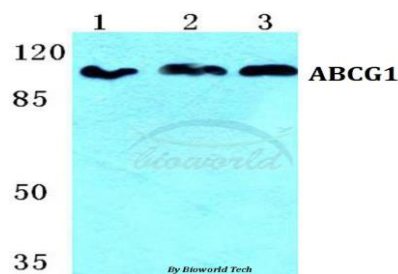
Storage&Stability:

Store at 4 °C short term. Aliquot and store at -20 °C long term. Avoid freeze-thaw cycles.

Specificity:

ABCG1 polyclonal antibody detects endogenous levels of ABCG1 protein.

DATA:



Western blot (WB) analysis of ABCG1 polyclonal antibody at 1:500 dilution

Lane1: Jurkat cell lysate

Lane2: Mouse liver tissue lysate

Lane3: Rat liver tissue lysate

Note:

For research use only, not for use in diagnostic procedure.

Bioworld Technology, Inc.

Add: 1660 South Highway 100, Suite 500 St. Louis Park, MN 55416, USA.

Email: info@bioworld.com

Tel: 6123263284

Fax: 6122933841

Bioworld technology, co. Ltd.

Add: No 9, weidi road Qixia District Nanjing, 210046, P. R. China.

Email: info@biogot.com

Tel: 0086-025-68037686

Fax: 0086-025-68035151