

Crk2 (phospho-Try221) polyclonal antibody

Catalog: BS5064

Host: Rabbit

Reactivity: Human, Mouse, Rat

BackGround:

Crk I and Crk II are encoded by the same gene, which undergoes alternative splicing to yield these two proteins, but differ in their biological activities. Crk II has less transforming activity than Crk I, although both Crk I and Crk II bind to many tyrosine-phosphorylated proteins that bind to GRB2. In addition, Crk II becomes rapidly tyrosine-phosphorylated in response to stimulation with insulin-like growth factor I (IGF-I) and might be involved in the IGF-I receptor signalling pathway.

Product:

Rabbit IgG, 1mg/ml in PBS with 0.02% sodium azide, 50% glycerol, pH7.2

Molecular Weight:

~ 42 kDa

Swiss-Prot:

P46108

Purification&Purity:

The antibody was affinity-purified from rabbit antiserum by affinity-chromatography using epitope-specific immunogen and the purity is > 95% (by SDS-PAGE).

Applications:

IHC: 1:50~1:200

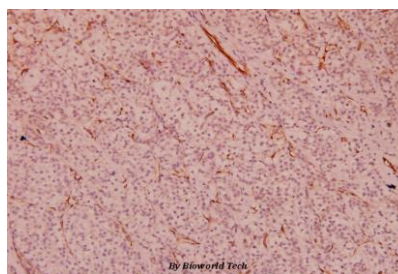
Storage&Stability:

Store at 4 °C short term. Aliquot and store at -20 °C long term. Avoid freeze-thaw cycles.

Specificity:

p-Crk2 (Try221) polyclonal antibody detects endogenous levels of Crk2 protein only when phosphorylated at Try221.

DATA:



Immunohistochemistry (IHC) analyzes of p-Crk2 (Try221) pAb in paraffin-embedded human liver carcinoma tissue at 1:100.

Note:

For research use only, not for use in diagnostic procedure.

Bioworld Technology, Inc.

Add: 1660 South Highway 100, Suite 500 St. Louis Park, MN 55416, USA.

Email: info@bioworld.com

Tel: 6123263284

Fax: 6122933841

Bioworld technology, co. Ltd.

Add: No 9, weidi road Qixia District Nanjing, 210046, P. R. China.

Email: info@biogot.com

Tel: 0086-025-68037686

Fax: 0086-025-68035151