

**SNF2L Recombinant Rabbit mAb**

Catalog: BS48661

Host: Rabbit

Reactivity: Human

**BackGround:**

This gene encodes a member of the SWI/SNF family of proteins. The encoded protein is an ATPase which is expressed in diverse tissues and contributes to the chromatin remodeling complex that is involved in transcription. The protein may also play a role in DNA damage, growth inhibition and apoptosis of cancer cells. Alternative splicing results in multiple transcript variants. [provided by RefSeq, Sep 2013]

**Product:**

Store at -20 °C. Supplied in 50mM Tris-Glycine(pH 7.4), 0.15M NaCl, 40%Glycerol, 0.01% sodium azide and 0.05% BSA. Stable for 12 months from date of receipt.

**Molecular Weight:**

123 kDa

**Swiss-Prot:**

P28370

**Purification&Purity:**

Affinity Purification

**Applications:**

WB: 1:1000&lt;br /&gt;IHC: 1:100&lt;br /&gt;ICC/IF: 1:100&lt;br /&gt;

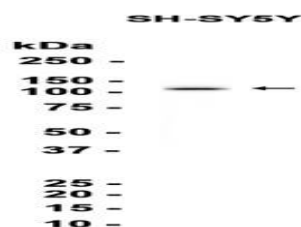
&lt;br /&gt;IP: 1:20

**Storage&Stability:**

Store at 4 °C short term. Aliquot and store at -20 °C long term. Avoid freeze-thaw cycles.

**Isotype:**

IgG

**DATA:**

Western blot analysis of extracts from SH-SY5Y cells using BS48661 at 1: 1000.

**Note:**

For research use only, not for use in diagnostic procedure.

**Bioworld Technology, Inc.**

Add: 1660 South Highway 100, Suite 500 St. Louis Park,  
MN 55416, USA.

Email: [info@bioworld.com](mailto:info@bioworld.com)

Tel: 6123263284

Fax: 6122933841

**Bioworld technology, co. Ltd.**

Add: No 9, weidi road Qixia District Nanjing, 210046,  
P. R. China.

Email: [info@biogot.com](mailto:info@biogot.com)

Tel: 0086-025-68037686

Fax: 0086-025-68035151