

PLD2 (phospho-Y169) polyclonal antibody

Catalog: BS4858

Host: Rabbit

Reactivity: Human, Mouse, Rat

Background:

Phosphatidylcholine phospholipase D1 and D2 (PC-PLD1 and PC-PLD2) are phospholipid-specific phosphodiesterases that hydrolyze phosphatidylcholine. Unlike PC-PLD1, which associates with secretory granules, PC-PLD2 localizes to the plasma membrane, where it is implicated in the formation of endocytotic vesicles. Both PC-PLD1 and PC-PLD2 coordinately regulate macrophage phagocytosis. PC-PLD activity in mammalian cells is transiently stimulated upon activation by G protein-coupled and receptor tyrosine kinase cell surface receptors. In addition, tubulin binding to PC-PLD2 inhibits muscarinic receptor-linked PC-PLD2 activation. PC-PLD2 also enhances PKC ζ activity through direct interaction in a lipase activity-independent manner.

Product:

Rabbit IgG, 1mg/ml in PBS with 0.02% sodium azide, 50% glycerol, pH7.2

Molecular Weight:

~ 106 kDa

Swiss-Prot:

O14939

Purification&Purity:

The antibody was affinity-purified from rabbit antiserum by affinity-chromatography using epitope-specific immunogen and the purity is > 95% (by SDS-PAGE).

Applications:

WB: 1:500~1:1000

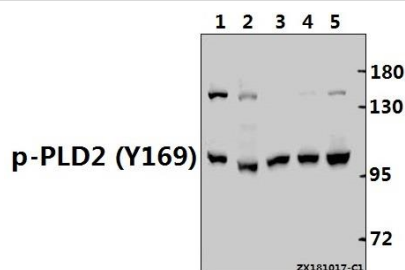
Storage&Stability:

Store at 4 °C short term. Aliquot and store at -20 °C long term. Avoid freeze-thaw cycles.

Specificity:

p-PLD2 (Y169) polyclonal antibody detects endogenous levels of PLD2 protein only when phosphorylated at Tyr169.

DATA:



Western blot (WB) analysis of p-PLD2 (Y169) pAb at 1:500 dilution

Lane1:HEK293T whole cell lysate(40ug)

Lane2:C6 whole cell lysate(40ug)

Lane3:The Embryo tissue lysate of Mouse(40ug)

Lane4:A549 whole cell lysate(40ug)

Lane5:Hela whole cell lysate(40ug)

Note:

For research use only, not for use in diagnostic procedure.

Bioworld Technology, Inc.

Add: 1660 South Highway 100, Suite 500 St. Louis Park, MN 55416, USA.

Email: info@bioworld.com

Tel: 6123263284

Fax: 6122933841

Bioworld technology, co. Ltd.

Add: No 9, weidi road Qixia District Nanjing, 210046, P. R. China.

Email: info@biogot.com

Tel: 0086-025-68037686

Fax: 0086-025-68035151