

Mucin 1 (phospho-Y1229) polyclonal antibody

Catalog: BS4847

Host: Rabbit

Reactivity: Human, Mouse, Rat

BackGround:

MUC1 is a large cell surface mucin glycoprotein expressed by most glandular and ductal epithelial cells and some hematopoietic cell lineages. It is expressed on most secretory epithelium, including mammary gland and some hematopoietic cells. It is expressed abundantly in lactating mammary glands and overexpressed abundantly in >90% breast carcinomas and metastases. Transgenic MUC1 has been shown to associate with all four cEBB receptors and localize with erbB1 (EGFR) in lactating glands. The MUC1 gene contains seven exons and produces several different alternatively spliced variants.

Product:

1 mg/ml in Phosphate buffered saline (PBS) with 0.05% sodium azide, approx. pH 7.2.

Molecular Weight:

~ 122, 170 kDa

Swiss-Prot:

P15941

Purification&Purity:

The antibody was affinity-purified from rabbit antiserum by affinity-chromatography using epitope-specific immunogen and the purity is > 95% (by SDS-PAGE).

Applications:

WB: 1:500~1:1000

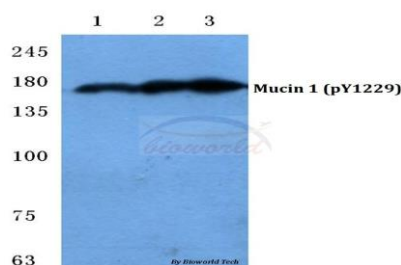
Storage&Stability:

Store at 4 °C short term. Aliquot and store at -20 °C long term. Avoid freeze-thaw cycles.

Specificity:

p-Mucin 1 (Y1229) polyclonal antibody detects endogenous levels of Mucin 1 protein only when phosphorylated at Tyr1229.

DATA:



Western blot (WB) analysis of p-Mucin 1 (Y1229) polyclonal antibody at 1:500 dilution

Lane1:MCF-7 cell lysate treated with PMA(100nM,15mins)

Lane2:NIH-3T3 cell lysate treated with PMA(100nM,15mins)

Lane3:H9C2 cell lysate treated with PMA(100nM,15mins)

Note:

For research use only, not for use in diagnostic procedure.

Bioworld Technology, Inc.

Add: 1660 South Highway 100, Suite 500 St. Louis Park, MN 55416, USA.

Email: info@bioworld.com

Tel: 6123263284

Fax: 6122933841

Bioworld technology, co. Ltd.

Add: No 9, weidi road Qixia District Nanjing, 210046, P. R. China.

Email: info@biogot.com

Tel: 0086-025-68037686

Fax: 0086-025-68035151