

LKB1 (phospho-S428) polyclonal antibody

Catalog: BS4842

Host: Rabbit

Reactivity: Human

BackGround:

LKB1, a member of the serine/threonine kinase family, is a tumor suppressor. Physically associates with p53, it regulates specific p53 dependent apoptosis pathways. LKB1 protein is present in both the cytoplasm and nucleus of living cells and translocates to mitochondria during apoptosis. Restoring LKB1 activity into cancer cell lines defective for its expression results in a G1 cell cycle arrest. Mutations in LKB1 gene are associated with Peutz Jeghers syndrome, an autosomal dominant disorder characterized by the growth of polyps in the gastrointestinal tract, pigmented macules on the skin and mouth, and other neoplasms. LKB1 functions as a master upstream protein kinase, regulating AMPK related kinases as well as AMPK.

Product:

1 mg/ml in Phosphate buffered saline (PBS) with 0.05% sodium azide, approx. pH 7.2.

Molecular Weight:

~ 54 kDa

Swiss-Prot:

Q15831

Purification&Purity:

The antibody was affinity-purified from rabbit antiserum by affinity-chromatography using epitope-specific immunogen and the purity is > 95% (by SDS-PAGE).

Applications:

WB:1:500~1:1000

IHC:1:50~1:200

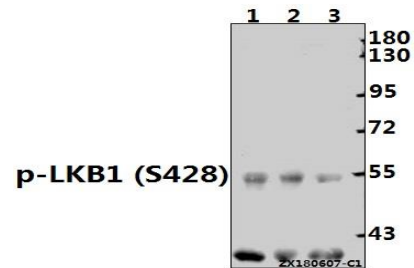
Storage&Stability:

Store at 4 °C short term. Aliquot and store at -20 °C long term. Avoid freeze-thaw cycles.

Specificity:

p-LKB1 (S428) polyclonal antibody detects endogenous levels of LKB1 protein only when phosphorylated at Ser428.

DATA:

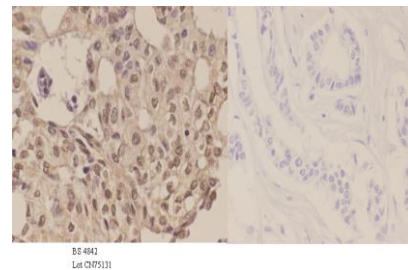


Western blot (WB) analysis of p-LKB1 (S428) pAb at 1:500 dilution

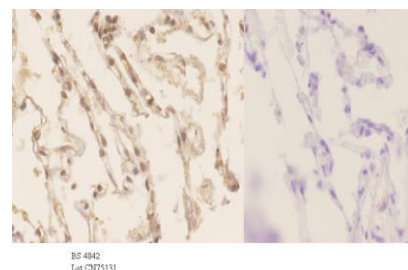
Lane1:A549 whole cell lysate(40ug)

Lane2:A2780 whole cell lysate(40ug)

Lane3:HepG2 whole cell lysate(40ug)



Immunohistochemistry (IHC) analyzes of p-LKB1 (S428) pAb in paraffin-embedded human breast carcinoma tissue at 1:50. showing cytoplasmic and nucleus staining. Negative control (the right) Using PBS instead of primary antibody, secondary antibody is Goat Anti-Rabbit IgG-biotin followed by avidin-peroxidase.



Immunohistochemistry (IHC) analyzes of p-LKB1 (S428) pAb in paraffin-embedded human lung carcinoma tissue at 1:50. showing cytoplasmic and nucleus staining. Negative control (the right) Using PBS instead of primary antibody, secondary antibody is Goat Anti-Rabbit IgG-biotin followed by avidin-peroxidase.

Bioworld Technology, Inc.

Add: 1660 South Highway 100, Suite 500 St. Louis Park, MN 55416, USA.

Email: info@bioworld.com

Tel: 6123263284

Fax: 6122933841

Bioworld technology, co. Ltd.

Add: No 9, weidi road Qixia District Nanjing, 210046, P. R. China.

Email: info@biogot.com

Tel: 0086-025-68037686

Fax: 0086-025-68035151



PRODUCT DATA SHEET

Bioworld Technology, Inc.

Note:

For research use only, not for use in diagnostic procedure.

Bioworld Technology, Inc.

Add: 1660 South Highway 100, Suite 500 St. Louis Park,
MN 55416, USA.

Email: info@bioworld.com

Tel: 6123263284

Fax: 6122933841

Bioworld technology, co. Ltd.

Add: No 9, weidi road Qixia District Nanjing, 210046,
P. R. China.

Email: info@biogot.com

Tel: 0086-025-68037686

Fax: 0086-025-68035151