



## Natriuretic peptides A Recombinant Rabbit mAb

Catalog: BS48392

Host: Rabbit

Reactivity: Mouse, Rat

### BackGround:

This gene encodes members of the natriuretic family of peptides that play an important role in the control of extracellular fluid volume and electrolyte homeostasis. The encoded protein precursor undergoes proteolytic processing to generate multiple functional peptides. Mice lacking the encoded peptides exhibit salt-sensitive hypertension. The transgenic overexpression of the encoded peptides in mice decreases arterial blood pressure without inducing diuresis and natriuresis. This gene is located adjacent to another member of the natriuretic family of peptides on chromosome 4. [provided by RefSeq, Oct 2015]

### Product:

Store at -20 °C. Supplied in 50mM Tris-Glycine(pH 7.4), 0.15M NaCl, 40% Glycerol, 0.01% sodium azide and 0.05% BSA. Stable for 12 months from date of receipt.

### Molecular Weight:

17 kDa

### Swiss-Prot:

P05125

### Purification&Purity:

Affinity Purification

### Applications:

WB: 1:1000 IHC: 1:100 IP: 1:20

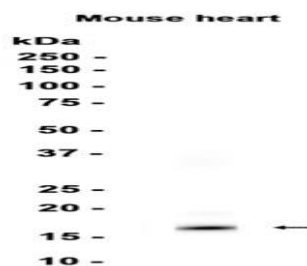
### Storage&Stability:

Store at 4 °C short term. Aliquot and store at -20 °C long term. Avoid freeze-thaw cycles.

### Isotype:

IgG

### DATA:



Western blot analysis of extracts from Mouse heart tissue at 1:1000.

### Note:

For research use only, not for use in diagnostic procedure.

### Bioworld Technology, Inc.

Add: 1660 South Highway 100, Suite 500 St. Louis Park, MN 55416, USA.

Email: [info@bioworld.com](mailto:info@bioworld.com)

Tel: 6123263284

Fax: 6122933841

### Bioworld technology, co. Ltd.

Add: No 9, weidi road Qixia District Nanjing, 210046, P. R. China.

Email: [info@biogot.com](mailto:info@biogot.com)

Tel: 0086-025-68037686

Fax: 0086-025-68035151