

## JAML Recombinant Rabbit mAb

Catalog: BS48182

Host: Rabbit

Reactivity: Human, Mouse, Rat

### BackGround:

Transmembrane protein of the plasma membrane of leukocytes that control their migration and activation through interaction with CXADR, a plasma membrane receptor found on adjacent epithelial and endothelial cells. The interaction between both receptors mediates the activation of gamma-delta T-cells, a subpopulation of T-cells residing in epithelia and involved in tissue homeostasis and repair. Upon epithelial CXADR-binding, JAML induces downstream cell signaling events in gamma-delta T-cells through PI3-kinase and MAP kinases. It results in proliferation and production of cytokines and growth factors by T-cells that in turn stimulate epithelial tissues repair. It also controls the transmigration of leukocytes within epithelial and endothelial tissues through adhesive interactions with epithelial and endothelial CXADR.

### Product:

Store at -20 °C. Supplied in 50mM Tris-Glycine(pH 7.4), 0.15M NaCl, 40%Glycerol, 0.01% sodium azide and 0.05% BSA. Stable for 12 months from date of receipt.

### Molecular Weight:

60 kDa

### Swiss-Prot:

Q86YT9

### Purification&Purity:

Affinity Purification

### Applications:

WB: 1:1000-1:2000&lt;br /&gt;FC: 1:20&lt;br /&gt;IP: 1:20

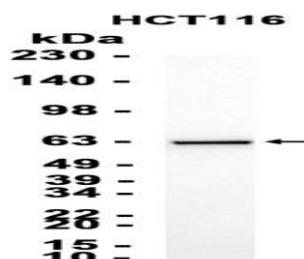
### Storage&Stability:

Store at 4 °C short term. Aliquot and store at -20 °C long term. Avoid freeze-thaw cycles.

### Isotype:

IgG

### DATA:



Western blot analysis of extracts from HCT116 cells at 1:1000.

### Note:

For research use only, not for use in diagnostic procedure.

### Bioworld Technology, Inc.

Add: 1660 South Highway 100, Suite 500 St. Louis Park, MN 55416, USA.

 Email: [info@bioworld.com](mailto:info@bioworld.com)

Tel: 6123263284

Fax: 6122933841

### Bioworld technology, co. Ltd.

Add: No 9, weidi road Qixia District Nanjing, 210046, P. R. China.

 Email: [info@biogot.com](mailto:info@biogot.com)

Tel: 0086-025-68037686

Fax: 0086-025-68035151