

EAAT2 Recombinant Rabbit mAb

Catalog: BS48131

Host: Rabbit

Reactivity: Mouse, Rat

BackGround:

Sodium-dependent, high-affinity amino acid transporter that mediates the uptake of L-glutamate and also L-aspartate and D-aspartate (PubMed:7698742, PubMed:7557442, PubMed:9373176). Functions as a symporter that transports one amino acid molecule together with two or three Na⁺ ions and one proton, in parallel with the counter-transport of one K⁺ ion. Mediates Cl⁻ flux that is not coupled to amino acid transport; this avoids the accumulation of negative charges due to aspartate and Na⁺ symport (By similarity). Essential for the rapid removal of released glutamate from the synaptic cleft, and for terminating the postsynaptic action of glutamate (PubMed:9180080).

Product:

Store at -20 °C. Supplied in 50mM Tris-Glycine(pH 7.4), 0.15M NaCl, 40%Glycerol, 0.01% sodium azide and 0.05% BSA. Stable for 12 months from date of receipt.

Molecular Weight:

65 kDa

Swiss-Prot:

P43006

Purification&Purity:

Affinity Purification

Applications:

WB: 1:1000
IHC: 1:200
IP: 1:20

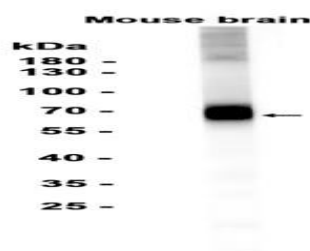
Storage&Stability:

Store at 4 °C short term. Aliquot and store at -20 °C long term. Avoid freeze-thaw cycles.

Isotype:

IgG

DATA:



Western blot analysis of extracts from Mouse brain tissue at 1:3000.

Note:

For research use only, not for use in diagnostic procedure.

Bioworld Technology, Inc.

Add: 1660 South Highway 100, Suite 500 St. Louis Park, MN 55416, USA.

Email: info@bioworld.com

Tel: 6123263284

Fax: 6122933841

Bioworld technology, co. Ltd.

Add: No 9, weidi road Qixia District Nanjing, 210046, P. R. China.

Email: info@biogot.com

Tel: 0086-025-68037686

Fax: 0086-025-68035151