

## Gab 1 (phospho-Y627) polyclonal antibody

Catalog: BS4790

Host: Rabbit

Reactivity: Human

### BackGround:

Gab 1 (GRB2-associated binder 1), one such member of the IRS family, plays an important role in cellular growth response, transformation and apoptosis. Gab 1 is a multi-substrate docking protein that functions downstream in the signaling pathways of different receptor kinases, including EGFR. Gab1 is tyrosine phosphorylated normally in response to insulin and consequently enhances phosphatidylinositol 3- kinase (PI3K) binding. In response to osmotic shock, tyrosine-phosphorylated Gab 1 (p-Gab 1) also binds and activates phosphatidylinositol 3-kinase, suggesting that Gab 1 is the major site for PI3K recruitment following osmotic shock stimulation.

### Product:

Rabbit IgG, 1mg/ml in PBS with 0.02% sodium azide, 50% glycerol, pH7.2

### Molecular Weight:

~ 115 kDa

### Swiss-Prot:

Q13480

### Purification&Purity:

The antibody was affinity-purified from rabbit antiserum by affinity-chromatography using epitope-specific immunogen and the purity is > 95% (by SDS-PAGE).

### Applications:

WB: 1:500~1:1000

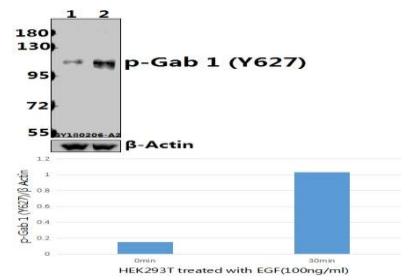
### Storage&Stability:

Store at 4 °C short term. Aliquot and store at -20 °C long term. Avoid freeze-thaw cycles.

### Specificity:

p-Gab 1 (Y627) polyclonal antibody detects endogenous levels of Gab 1 protein only when phosphorylated at Tyr627.

### DATA:



Western blot (WB) analysis of p-Gab 1 (Y627) pAb at 1:500 dilution

Lane1:HEK293T whole cell lysate(40ug)

Lane2:HEK293T treated with EGF(100ng/ml,30 minutes) whole cell lysate(40ug)

### Note:

For research use only, not for use in diagnostic procedure.

### Bioworld Technology, Inc.

Add: 1660 South Highway 100, Suite 500 St. Louis Park, MN 55416, USA.

Email: [info@bioworld.com](mailto:info@bioworld.com)

Tel: 6123263284

Fax: 6122933841

### Bioworld technology, co. Ltd.

Add: No 9, weidi road Qixia District Nanjing, 210046, P. R. China.

Email: [info@biogot.com](mailto:info@biogot.com)

Tel: 0086-025-68037686

Fax: 0086-025-68035151