

**MMP21 Recombinant Rabbit mAb**

Catalog: BS47473

Host: Rabbit

Reactivity: Human, Mouse, Rat

**BackGround:**

This gene encodes a member of the matrix metalloproteinase family. Proteins in this family are involved in the breakdown of extracellular matrix for both normal physiological processes, such as embryonic development, reproduction, and tissue remodeling, and disease processes, such as asthma and tumor metastasis. The encoded protein may play an important role in embryogenesis, particularly in neuronal cells, as well as in lymphocyte development and survival. [provided by RefSeq, May 2013]

**Product:**

Store at -20 °C. Supplied in 50mM Tris-Glycine(pH 7.4), 0.15M NaCl, 40%Glycerol, 0.01% sodium azide and 0.05% BSA. Stable for 12 months from date of receipt.

**Molecular Weight:**

45,60 kDa

**Swiss-Prot:**

Q8N119

**Purification&Purity:**

Affinity Purification

**Applications:**

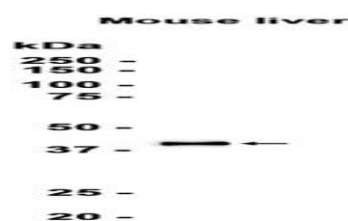
WB: 1:5000<br />IHC: 1:100<br />ICC/IF: 1:100<br />FC: 1:20<br />IP: 1:20

**Storage&Stability:**

Store at 4 °C short term. Aliquot and store at -20 °C long term. Avoid freeze-thaw cycles.

**Isotype:**

IgG

**DATA:**

Western blot analysis of extracts from Mouse liver tissue using BS47473 at 1: 1000.

**Note:**

For research use only, not for use in diagnostic procedure.

**Bioworld Technology, Inc.**

Add: 1660 South Highway 100, Suite 500 St. Louis Park,  
MN 55416, USA.

Email: [info@bioworld.com](mailto:info@bioworld.com)

Tel: 6123263284

Fax: 6122933841

**Bioworld technology, co. Ltd.**

Add: No 9, weidi road Qixia District Nanjing, 210046,  
P. R. China.

Email: [info@biogot.com](mailto:info@biogot.com)

Tel: 0086-025-68037686

Fax: 0086-025-68035151