

## RPS6 (phospho-S235) polyclonal antibody

Catalog: BS4745

Host: Rabbit

Reactivity: Human, Mouse, Rat

### Background:

Ribosomal protein S6 is a component of the small 40S ribosomal subunit and belongs to the S6E family of ribosomal proteins. It is the major substrate of protein kinases in the ribosome, with subsets of five C-terminal serine residues phosphorylated by different protein kinases. Phosphorylation is induced by a wide range of stimuli, including growth factors, tumor-promoting agents, and mitogens. Dephosphorylation occurs at growth arrest. The protein may contribute to the control of cell growth and proliferation through the selective translation of particular classes of mRNA. As is typical for genes encoding ribosomal proteins, there are multiple processed pseudogenes of this gene dispersed through the genome.

### Product:

Rabbit IgG, 1mg/ml in PBS with 0.02% sodium azide, 50% glycerol, pH7.2

### Molecular Weight:

~ 29 kDa

### Swiss-Prot:

P62753

### Purification&Purity:

The antibody was affinity-purified from rabbit antiserum by affinity-chromatography using epitope-specific immunogen and the purity is > 95% (by SDS-PAGE).

### Applications:

WB: 1:500~1:1000

IF: 1:50~1:200

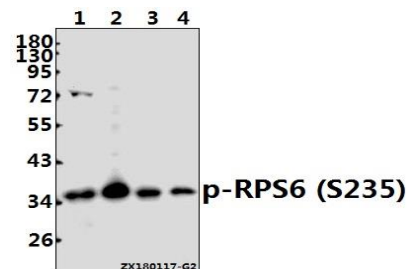
### Storage&Stability:

Store at 4 °C short term. Aliquot and store at -20 °C long term. Avoid freeze-thaw cycles.

### Specificity:

p-Ribosomal Protein S6 (S235) polyclonal antibody detects endogenous levels of Ribosomal Protein S6 protein only when phosphorylated at Ser235.

### DATA:



Western blot (WB) analysis of p-RPS6 (S235) pAb at 1:500 dilution

Lane1:PC12 whole cell lysate(40ug)

Lane2:Panc1 whole cell lysate(40ug)

Lane3:CT26 whole cell lysate(40ug)

Lane4:EC9706 whole cell lysate(40ug)

### Note:

For research use only, not for use in diagnostic procedure.

### Bioworld Technology, Inc.

Add: 1660 South Highway 100, Suite 500 St. Louis Park, MN 55416, USA.

Email: [info@bioworld.com](mailto:info@bioworld.com)

Tel: 6123263284

Fax: 6122933841

### Bioworld technology, co. Ltd.

Add: No 9, weidi road Qixia District Nanjing, 210046, P. R. China.

Email: [info@biogot.com](mailto:info@biogot.com)

Tel: 0086-025-68037686

Fax: 0086-025-68035151