

## RGS16 (phospho-Y168) polyclonal antibody

Catalog: BS4700

Host: Rabbit

Reactivity: Mouse, Rat

### BackGround:

The protein encoded by this gene belongs to the 'regulator of G protein signaling' family. It inhibits signal transduction by increasing the GTPase activity of G protein alpha subunits. It also may play a role in regulating the kinetics of signaling in the phototransduction cascade.

### Product:

Rabbit IgG, 1mg/ml in PBS with 0.02% sodium azide, 50% glycerol, pH7.2

### Molecular Weight:

~ 23 kDa

### Swiss-Prot:

O15492

### Purification&Purity:

The antibody was affinity-purified from rabbit antiserum by affinity-chromatography using epitope-specific immunogen and the purity is > 95% (by SDS-PAGE).

### Applications:

WB: 1:500~1:1000

### Storage&Stability:

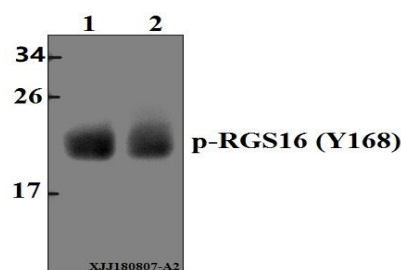
Store at 4 °C short term. Aliquot and store at -20 °C long

term. Avoid freeze-thaw cycles.

### Specificity:

RGS16 (phospho-Y168) polyclonal antibody detects endogenous levels of RGS16 protein when phosphorylated at Tyr168.

### DATA:



Western blot (WB) analysis of p-RGS16 (Y168) pAb at 1:500 dilution

Lane1: The Eye tissue lysate of Mouse (40 µg)

Lane2: The Eye tissue lysate of Rat (40 µg)

### Note:

For research use only, not for use in diagnostic procedure.

### Bioworld Technology, Inc.

Add: 1660 South Highway 100, Suite 500 St. Louis Park, MN 55416, USA.

Email: [info@bioworld.com](mailto:info@bioworld.com)

Tel: 6123263284

Fax: 6122933841

### Bioworld technology, co. Ltd.

Add: No 9, weidi road Qixia District Nanjing, 210046, P. R. China.

Email: [info@biogol.com](mailto:info@biogol.com)

Tel: 0086-025-68037686

Fax: 0086-025-68035151