

HBP1 (phospho-S402) polyclonal antibody

Catalog: BS4692

Host: Rabbit

Reactivity: Human, Mouse, Rat

Background:

The HMG-box protein-1 (HBP1) is a member of the HMG family of transcription factors, which are characterized by the presence of a conserved protein motif, the high mobility group (HMG) 1 box, that mediates DNA binding. HBP1 binds to the tumor suppressor proteins Rb and p130 and initiates cell cycle arrest. Terminal cell differentiation requires this initial cell cycle arrest followed by the coordinated expression of genes defined as tissue-specific markers. Along with initiating the commitment to cell differentiation, the continued activity of HBP1 abrogates the expression of tissue-specific genes by associating with the MyoD proteins. In muscle cell differentiation, the MyoD family of transcription factors, which include Myf5, MyoD and myogenin, induce the expression of these cell-type specific proteins and contribute to the development of cell phenotypes. The progression of terminal differentiation is, therefore, dependent on both a decrease in HBP1 activity and the corresponding activation of MyoD-induced gene transcription.

Product:

1 mg/ml in Phosphate buffered saline (PBS) with 15 mM sodium azide, approx. pH 7.2.

Molecular Weight:

~ 58, 80 kDa

Swiss-Prot:

O60381

Purification&Purity:

The antibody was affinity-purified from rabbit antiserum by affinity-chromatography using epitope-specific im-

munogen and the purity is > 95% (by SDS-PAGE).

Applications:

WB: 1:500~1:1000

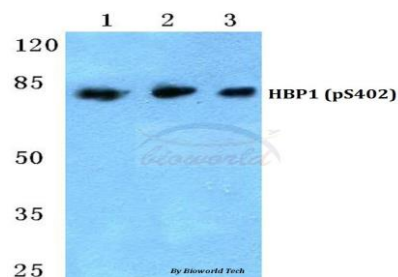
Storage&Stability:

Store at 4 °C short term. Aliquot and store at -20 °C long term. Avoid freeze-thaw cycles.

Specificity:

p-HBP1 (S402) polyclonal antibody detects endogenous levels of HBP1 protein only when phosphorylated at Ser402.

DATA:



Western blot (WB) analysis of p-HBP1 (S402) polyclonal antibody at 1:500 dilution

Lane1: HEK293T cell lysate treated with PMA(100nM, 15mins)

Lane2: Mouse spleen tissue lysate

Lane3: Rat spleen tissue lysate

Note:

For research use only, not for use in diagnostic procedure.

Bioworld Technology, Inc.

Add: 1660 South Highway 100, Suite 500 St. Louis Park, MN 55416, USA.

Email: info@bioworld.com

Tel: 6123263284

Fax: 6122933841

Bioworld technology, co. Ltd.

Add: No 9, weidi road Qixia District Nanjing, 210046, P. R. China.

Email: info@biogot.com

Tel: 0086-025-68037686

Fax: 0086-025-68035151