

EGFR (phospho-S1047) polyclonal antibody

Catalog: BS4681

Host: Rabbit

Reactivity: Human, Mouse, Rat

Background:

EGFR (Epidermal growth factor receptor, ErbB-1) is a receptor tyrosine kinase (RTK) that is one of four members of the EGFR/ErbB family of receptor tyrosine kinases. EGFR plays a key role in the regulation of essential normal cellular processes and in the pathophysiology of hyperproliferative diseases such as cancer. Activation of the EGFR signaling pathway has been linked with increased cell proliferation, angiogenesis, metastasis and decreased apoptosis. EGFR carboxy-terminal residues Ser1046 and Ser1047 are phosphorylated by CaM kinase II; mutation of either of these serines results in upregulated EGFR tyrosine autophosphorylation.

Product:

Rabbit IgG, 1mg/ml in PBS with 0.02% sodium azide, 50% glycerol, pH7.2

Molecular Weight:

~ 175 kDa

Swiss-Prot:

P00533

Purification&Purity:

The antibody was affinity-purified from rabbit antiserum by affinity-chromatography using epitope-specific immunogen and the purity is > 95% (by SDS-PAGE).

Applications:

WB: 1:500~1:1000

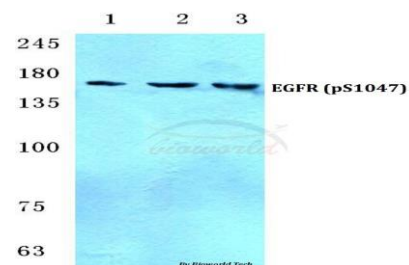
Storage&Stability:

Store at 4 °C short term. Aliquot and store at -20 °C long term. Avoid freeze-thaw cycles.

Specificity:

p-EGFR (S1047) polyclonal antibody detects endogenous levels of EGFR protein only when phosphorylated at Ser1047 (removal of the signal peptide).

DATA:



Western blot (WB) analysis of p-EGFR (S1047) polyclonal antibody at 1:500 dilution

Lane1:HEK293T cell lysate

Lane2:Raw264.7 cell lysate

Lane3:PC12 cell lysate

Note:

For research use only, not for use in diagnostic procedure.

Bioworld Technology, Inc.

Add: 1660 South Highway 100, Suite 500 St. Louis Park, MN 55416, USA.

Email: info@bioworld.com

Tel: 6123263284

Fax: 6122933841

Bioworld technology, co. Ltd.

Add: No 9, weidi road Qixia District Nanjing, 210046, P. R. China.

Email: info@biogot.com

Tel: 0086-025-68037686

Fax: 0086-025-68035151