

## C/EBP $\alpha$ (phospho-T226) polyclonal antibody

Catalog: BS4659

Host: Rabbit

Reactivity: Human, Mouse, Rat

### Background:

C/EBP  $\alpha$  regulates gene expression in a variety of tissues including liver, adipose, lung and intestine. C/EBP  $\alpha$  is a basic region/leucine zipper transcription factor selectively expressed during the differentiation of liver, adipose tissue, blood cells and the endocrine pancreas. C/EBP  $\alpha$  uses a bipartite structural motif to bind DNA and appears to function exclusively in terminally differentiated, growth-arrested cells. In the liver, C/EBP  $\alpha$  is a transactivator of several genes, which are regulated by growth hormone. Growth hormone enhances not only the levels of C/EBP  $\alpha$  mRNA and protein, but also the DNA-binding activity of C/EBP  $\alpha$ . C/EBP  $\alpha$  functions as an important transcription factor that regulates different genes, including Prolactin gene expression.

### Product:

1 mg/ml in Phosphate buffered saline (PBS) with 0.05% sodium azide, approx. pH 7.2.

### Molecular Weight:

~ 30,45 kDa

### Swiss-Prot:

P49715

### Purification&Purity:

The antibody was affinity-purified from rabbit antiserum by affinity-chromatography using epitope-specific immunogen and the purity is > 95% (by SDS-PAGE).

### Applications:

WB: 1:500~1:1000

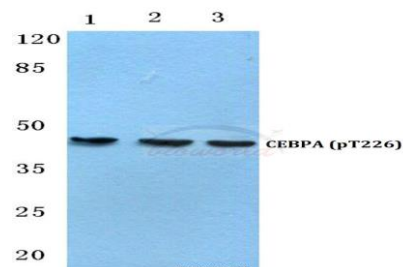
### Storage&Stability:

Store at 4 °C short term. Aliquot and store at -20 °C long term. Avoid freeze-thaw cycles.

### Specificity:

p-C/EBP  $\alpha$  (T226) polyclonal antibody detects endogenous levels of C/EBP  $\alpha$  protein only when phosphorylated at Thr226.

### DATA:



Western blot (WB) analysis of p-C/EBP  $\alpha$  (T226) polyclonal antibody at 1:500 dilution

Lane1:MCF-7 cell lysate treated with EGF(0.1ng/ML,30mins)

Lane2:Mouse spleen tissue lysate

Lane3:Rat spleen tissue lysate

### Note:

For research use only, not for use in diagnostic procedure.

### Bioworld Technology, Inc.

Add: 1660 South Highway 100, Suite 500 St. Louis Park, MN 55416, USA.

Email: [info@bioworld.com](mailto:info@bioworld.com)

Tel: 6123263284

Fax: 6122933841

### Bioworld technology, co. Ltd.

Add: No 9, weidi road Qixia District Nanjing, 210046, P. R. China.

Email: [info@biogot.com](mailto:info@biogot.com)

Tel: 0086-025-68037686

Fax: 0086-025-68035151